

ODISHA SDG INDICATOR FRAMEWORK



Planning & Convergence Department
Government of Odisha

Odisha SDG Indicator Framework



Planning & Convergence Department
Government of Odisha

Odisha SDG Indicator Framework

© Copyright 2019
Government of Odisha

Published by
Planning and Convergence Department
Government of Odisha

All Rights Reserved. No part of this publication
may be reproduced, stored or transmitted in
any form or by any means without the prior
permission of the Government of Odisha

Prepared by
Planning and Convergence Department
Government of Odisha, Bhubaneswar

Printed at
Odisha Government Press, Madhupatna, Cuttack

Contents

Message from the Chief Minister	v
Message from the Minister, P & C Department	vi
Message from the Chief Secretary	vii
Message from the Development Commissioner - cum - Additional Chief Secretary	viii
Acknowledgements	ix
Abbreviations	xi
Odisha SDG Indicator Framework : An Overview	1
Odisha SDG Indicator Framework	
SDG 1: No Poverty	5
SDG 2: Zero Hunger	13
SDG 3: Good Health and Well-Being	23
SDG 4: Quality Education	31
SDG 5: Gender Equality	39
SDG 6: Clean Water and Sanitation	55
SDG 7: Affordable and Clean Energy	61
SDG 8: Decent Work and Economic Growth	65
SDG 9: Industry, Innovation and Infrastructure	75
SDG 10: Reduced Inequality	83
SDG 11: Sustainable Cities and Communities	89
SDG 12: Responsible Consumption and Production	95
SDG 13: Climate Action	101
SDG 14: Life Below Water	105
SDG 15: Life on Land	111
SDG 16: Peace, Justice and Strong Institutions	119
SDG 17: Partnerships for the Goals	125

MESSAGE



Sri Naveen Patnaik
Chief Minister, Odisha



The Sustainable Development Goals (SDGs) are part of a universal agenda to end poverty, protect the planet and ensure that all people enjoy peace and prosperity. On 1st January, 2016, the World officially began implementation of the 2030 Agenda for Sustainable Development which includes 17 Goals and 169 Targets.

The Government of Odisha is taking keen interest to align with the SDG framework, thereby prioritizing development actions and challenges of the State. The SDG framework shifts the focus from mere expenditure to measurement of larger outcomes. In this endeavour, it complements the State's own citizen centric approach of the 5T framework wherein the 5Ts of Teamwork, Transparency, Technology, Transformation through Time, is already under implementation.

I am happy to learn that the Planning and Convergence Department, Government of Odisha, has formulated the 'Odisha SDG Indicator Framework (OSIF)' document, in consultation with all Departments. This should help Odisha better monitor the achievement of Sustainable Development Goals in the State.

I am hopeful the document will serve as a valuable tool to measure the performance of the State in key indicators. SDGs coupled with the 5Ts would certainly build a sustainable, empowered and inclusive Odisha.

(Naveen Patnaik)

MESSAGE



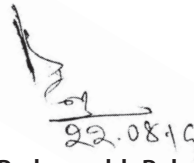
Sri Padmanav Behera

Minister, Planning & Convergence
and Commerce & Transport
Government of Odisha



The Sustainable Development Goals (SDGs) are the actionable core of the new development agenda of the UN which envisages a world where no one will be left behind. The 'Five Ps' or pillars - people, planet, prosperity, peace and partnership capture the broad scope of the agenda. While NITI Aayog will monitor SDGs for the country, Ministry of Statistics and Programme Implementation (MoSPI) , Govt. of India has developed a National Indicator Framework (NIF) comprising indicators to monitor the SDGs and its associated targets. Accordingly, Odisha has developed 'Odisha SDG Indicator Framework' (OSIF) after consultations and brain storming sessions with all concerned Departments and stakeholders.

I congratulate the officers and the SDG Core Team of P & C Department, Government of Odisha, led by Development Commissioner - cum - ACS whose professional rigour and sincere work has ensured both consensus across departments and a robust, usable yet visionary document.



22.08.19
(Padmanabh Behera)

MESSAGE



Sri Asit Tripathy, IAS

Chief Secretary
Government of Odisha



The 'Odisha SDG Indicator Framework' (OSIF), is a monitoring framework developed by the Planning & Convergence Department in consultation with all Departments of the Government of Odisha. It not only aligns with the National Indicator Framework (NIF) of the Ministry of Statistics and Programme Implementation (MoSPI), Government of India but also incorporates indicators from the NITI Aayog's SDG Index and adds the State's own localized, specific indicators. Thus it is able to capture not only the impact of Central and Centrally Sponsored Schemes but also of State Schemes with a view to track budgets and critical intervention over periods of time.

The OSIF has identified 367 Indicators which include 100 Outcome indicators, 143 Output indicators and 124 Process indicators across all goals. Of the 367 OSIF Indicators, 269 are from NIF and 98 are State specific indicators.


It is expected that Outcome and some Output indicators would be monitored at State level while Process Indicators would predominantly be monitored at field and Department level.

Odisha, uniquely, chose to color code the indicators so as to accommodate variants and inclusions: yellow for indicators from NIF; green for State's own Indicators (which also have an added OD identifier tag). Indicators are also understood as (+) or (-). The OSIF maps Indicators to Departments and to Schemes as per Plan heads (Central Scheme, Centrally Sponsored Scheme, and State Sector Scheme). This is a dynamic framework which has scope for modification and change as required over the 15 year SDG span.

The Government of Odisha has taken concrete initiatives which align with the Sustainable Development Goals (SDGs) framework in the State. The flagship programme of the State such as Biju Swasthya Kalyan Yojana, SAMPURNA, KALIA, MAMATA, Mission Shakti, BASUDHA etc. directly address the challenges highlighted by SDGs.

Our next steps are to converge SDG monitoring with the Hon'ble Chief Minister's 5Ts, such that with the power of technology, citizen centric governance becomes both measurable and meaningful.

I appreciate the sustained hard work of the officers and members of the SDG Core Team of P & C Department in bringing out this framework document. It is sure to be a valuable tool for measurement of our success in implementation and will serve as a guidepost for a common language to take the SDGs forward.



(Asit Tripathy)

MESSAGE



Sri Suresh Chandra Mahapatra, IAS

Development Commissioner- cum - Additional Chief Secretary
Government of Odisha



It gives me immense pleasure to know that Planning & Convergence Department has developed the 'Odisha SDG Indicator Framework (OSIF)' document in consultation with all Departments of State Government. The P & C Department, being the Nodal Department for implementation of SDGs in the State has sensitized all Secretaries of concerned Departments, about the SDGs. After consultations and brain storming sessions with all Departments and stakeholders 'Odisha SDG Indicator Framework' has been developed. The document provides a detail picture of all the goals, targets and indicators mapped with various flagship schemes across all the Departments. OSIF comprises in all 367 indicators.

OSIF will be the backbone of monitoring the SDGs at state and district levels. It will serve as a tool to develop implementation strategies and allocation of resources and also to measure progress towards achieving the SDGs.

Our Government has taken concrete initiatives to adopt and implement the Sustainable Development Goals (SDGs) framework in the State. State Schemes and Central Schemes being implemented by the different Departments along with the Budgets have been mapped out according to SDGs, related targets and indicators.

I sincerely hope that OSIF will serve as a useful document for monitoring the progress of SDGs in the State. I appreciate the efforts of all concerned officers in bringing out a comprehensive dynamic SDG indicator framework on the basis of which Odisha State Baseline Report on SDGs will be prepared very soon.

A handwritten signature in blue ink, reading 'Suresh Mahapatra'.

(Suresh Chandra Mahapatra)



Smt. Chithra Arumugam, IAS

Special Secretary
Planning and Convergence Department
Government of Odisha



Odisha is committed to achieving the Sustainable Development Goals (SDGs). Planning & Convergence Department, as Nodal Department, initiated a series of consultations with all departments to take forward the preparation of an Odisha SDG Indicator Framework (OSIF). Aligned to the National Indicator Framework (NIF) developed by Ministry of Statistics and Programme Implementation (MoSPI) and to NITI Aayog's SDG Index, the OSIF also captures State specific indicators. The OSIF is designed as a dynamic framework, adaptable to changes in policy outlook and hard reality as required over the 15 year span of the Global Agenda 2030. Currently, the OSIF holds 367 Indicators: 269 derived from NIF and 98 from the State's priorities. These have further been classified as Outcome Indicators (100), Output Indicators (143) and Process Indicators (124). They are spread across all goals.

We are indeed deeply grateful to Shri Asit Tripathy, IAS, Chief Secretary, for his mentoring, inspiration, sharp insights and highly valued leadership which helped the team to finalise the OSIF.

We are equally indebted to Shri Aditya Prasad Padhi, IAS, former Chief Secretary, for the clarity and mainstreaming of SDGs that emerged with each of the All Secretaries Meetings in which the OSIF was gradually given shape.

Our sincere gratitude to Shri Suresh Chandra Mahapatra, IAS, Development Commissioner-cum-ACS for his generous guidance and support in the last mile delivery of the OSIF.

We extend our sincere thanks to UNICEF Chief in Odisha, Ms Monika Oledzka Nielsen and especially to Dr. Soumen Ray, Social Policy Specialist, UNICEF, Odisha for continuous technical support to our SDG Core Team.

We express our deep gratitude to all the Departments of Government of Odisha, to all Additional Chief Secretaries, Principal Secretaries and Commissioner-cum- Secretaries for their continuous inputs and feedback for identification of Goal-wise SDG indicators and mapping of schemes. Our special thanks to the SDG Nodal Officers of Departments.

Our thanks to the SDG Core Team, Planning & Convergence Department for their enthusiasm, hard work and professionalism in formulating the OSIF:

Smt. Sudhapriya Das, Joint Director; Md Feroze Khan, Deputy Director, DE&S; Dr. Pranati Mishra, Assistant Director; Sri Gopinath Mohapatra, Assistant Director; Ms. Alaka Jena, Assistant Director; Smt. Sudha Panda, Assistant Director; Dr. Ramesh Chellan, UNICEF Consultant, Social Research; Sri Bimal K Sahu, IT Specialist, PHDMA and Sri Dinesh Gudi, ASO, SDG Cell.

We hope the OSIF will help streamline and track Odisha's progress as we strive collectively, in the true spirit of the 5Ts (Teamwork, Transparency, Technology and Transformation through Time), to achieve the values enshrined in the Sustainable Development Goals, Leaving No One Behind (LNOB).



(Chithra Arumugam)

Abbreviations

A & FE	Agriculture & Farmer's Empowerment	GCF	Gross Capital Formation
AIDS	Acquired Immune Deficiency Syndrome	GCF (2)	Green Climate Fund
ANC	Ante - Natal Care	GDP	Gross Domestic Product
ANM	Auxiliary Nurse Midwife	GIFT	Genetically Improved Farmed Tilapia
ART	Antiretroviral Therapy	GVA	Gross Value Added
ATM	Automated Teller Machine	GWRS	Ground Water Recharge Structure
AWC	Anganwadi Centre	H & FW	Health & Family Welfare
BCG	Bacille Calmette Guerin	H & UD	Housing & Urban Development
BOD	Biological Oxygen Demand	HE	Higher Education
C & T	Commerce & Transport	HIV	Human Immunodeficiency Virus
CFR	Case Fatality Rate	HT & H	Handlooms, Textiles & Handicrafts
CLIP	Community Lift Irrigation Point	ICDS	Integrated Child Development Scheme
CPCB	Central Pollution Control Board	ICT	Information & Communication Technology
DBW	Deep Bore Well	IMR	Infant Mortality Rate
DES	Directorate of Economics and Statistics	INR	Indian Rupee
DHH	District Headquarter Hospital	IPC	Indian Penal Code
E & IT	Electronics & Information Technology	IT	Information Technology
EODB	Ease of Doing Business	ITeS	Information Technology Enabled Service
EPS	Employees' Pension Scheme	KBK	Kalahandi, Bolangir, Koraput
ERM	Extension, Renovation and Modernisation	L & ESI	Labour & Employees' State Insurance
ESDM	Electronic System Design and Manufacturing	LED	Light Emitting Diode
ESI	Employee State Insurance	LF	Lymphatic Filariasis
EWE	Extreme Weather Event	LFPR	Labour Force Participation Rate
EWS	Economically Weaker Section	LHV	Lady Health Visitor
F & ARD	Fisheries and Animal Resources Development	LNOB	Leaving No One Behind
F & E	Forest & Environment	MCH	Medical College and Hospital
FRP	Fibre Reinforced Plastic	MCM	Million Cubic Meters
FS & CW	Food Supplies & Consumer Welfare	MDM	Mid Day Meal
GBC	Gender Budget Cell	MECP	Modal Eco - race Conservation Programme

MGNREGA	Mahatma Gandhi National Rural Employment Guarantee Act	Pro	Process
MMT	Million Metric Ton	PVTG	Particularly Vulnerable Tribal Group
MoSPI	Ministry of Statistics and Programme Implementation	R & D	Research and Development
MSME	Micro, Small & Medium Enterprises	R & DM	Revenue & Disaster Management
MSY	Maximum Sustainable Yield	RD	Rural Development
NAC	Notified Area Council	RNTCP	Revised National Tuberculosis Control Programme
NDC	Nationally Determined Contribution	RTI	Right to Information
NIF	National Indicator Framework	S & ME	School & Mass Education
NITI	National Institution for Transforming India	S & T	Science & Technology
NRLM	National Rural Livelihood Mission	SBM	Swachha Bharat Mission
NSSO	National Sample Survey Office	SC	Scheduled Caste
OC	Outcome	SD & TE	Skill Development & Technical Education
OD	Odisha	SDG	Sustainable Development Goal
ODF	Open Defecation Free	SHG	Self Help Group
OFD	On - Farm Development	SS & EPD	Social Security & Empowerment of Persons with Disabilities
OP	Output	ST	Scheduled Tribe
OSDMA	Odisha State Disaster Management Authority	ST & SC Dev.	Scheduled Tribe & Scheduled Caste Development
OTELP	Odisha Tribal Empowerment & Livelihood Programme	STW	Shallow Tube Well
P & C	Planning & Convergence	SEZ	Special Economic Zone
PA	Parliamentary Affairs	TB	Tuberculosis
PDS	Public Distribution System	TOF	Tree Outside Forest
PIM	Participatory Irrigation Management	UGPL	Under Ground Pipe Line
PM	Particulate Matter	VWSC	Village Water & Sanitation Committee
PMAY	Pradhan Mantri Awas Yojana	WCD & MS	Women & Child Development & Mission Shakti
PMGSY	Pradhan Mantri Gram Sadak Yojana	WHO	World Health Organisation
PMJPY	Pradhan Mantri Jan Dhan Yojana	WPR	Work Participation Rate
PR & DW	Panchayati Raj & Drinking Water	WR	Water Resources
PRI	Panchayati Raj Institution	WSHG	Women Self Help Group
		WUA	Water User Association

Odisha SDG Indicator Framework: An Overview

1. The UN General Assembly adopted the 2030 Development Agenda titled 'Transforming our World: the 2030 Agenda for Sustainable Development' on 25th September, 2015 with 17 Goals and 169 Targets called Sustainable Development Goals (SDGs). Its promise: 'Leaving No One Behind' (LNOB).

India is a signatory to this Resolution and is committed to support these 17 Goals which have 5 key objectives: People to end poverty and hunger, Planet to protect the planet from degradation, Prosperity to ensure that all human beings can enjoy prosperous and fulfilling lives, Peace to foster peaceful, just and inclusive societies and Partnership to mobilize the means required to implement this Agenda through a revitalised global partnership for sustainable development.

Officially, the SDGs came into effect from 1st January 2016 (on expiry of the MDGs) and will run through 2030. These 17 Goals build on the successes of the Millennium Development Goals (MDGs), while including new areas such as climate change, economic inequality, innovation, sustainable consumption, peace and justice, among other priorities.

2. The MDGs comprised 8 Goals and 18 Targets to address various development issues and were adopted for 2000 to 2015 at the Millennium Summit held in 2000 at the UN Headquarters in New York. These goals and targets were mainly limited to certain aspects of social and economic developmental issues. United Nations Development Group (UNDG) in 2003 provided a framework of 53 indicators to measure the progress of these targets. The MDGs targets were unevenly achieved across the countries and a need was felt to start fresh discussions to explore possible successor to guide development cooperation in the world beyond 2015. As a result of which the 17 Goals and 169 targets are set and the SDGs work in the spirit of partnership and pragmatism to make the right choices now to improve life, in a sustainable way, for future generations.
3. SDGs are a comprehensive set of interconnected goals and targets which are required to be monitored during 2016–2030. At national level, NITI Aayog is mandated with the task of coordinating work on SDGs by involving central ministries, States/Union Territories (UTs), civil society organizations, academia and business sector to achieve India's SDG targets. The Ministry of Statistics and Programme Implementation (MoSPI) is entrusted with the responsibility of identifying the nationally available datasets that align with the 17 SDGs and their 169 targets and has developed National Indicator Framework (NIF) comprising 306 indicators for measuring India's progress against SDGs and associated targets. The NIF is the largest monitoring framework in the country and has been shared with all States. The Planning & Convergence

Department at the State level has been made responsible for overall co-ordination of SDGs in the State with support of all stakeholders including Government Departments, District/ Block level institutions, experts and other institutions.

4. For operationalisation of SDGs, the Planning & Convergence Department being the Nodal Department has taken many steps as follows:

- An SDG Core Team has been constituted under SDG Cell of P&C Department supported by a UNICEF Consultant for implementation of different SDG activities like planning, strategizing and formulating action plans and monitoring implementation of SDGs.
- State's key Departments have been identified as aligning with SDG Goals. SDG Cells have been created in concerned Departments and Nodal Officers have been designated by respective Departments for the SDG Cells.
- Director, Economics & Statistics, under Planning & Convergence Department, Government of Odisha is the Nodal Officer for data flow on SDG indicators.
- All Secretaries of Departments have been drawn into the SDG conversation in four 'All Secretaries Meetings' held during the months of January to April, 2019 to identify State specific SDG indicators out of 306 National Indicator Framework (NIF) of MoSPI, Govt. of India. A series of consultative meetings were held with major Departments for mapping of schemes, budget and indicators from 306 NIF and also state specific indicators.

Planning & Convergence Department has further amalgamated the evolving Odisha SDG Indicator Framework and has ensured its aligning with NIF-MoSPI indicators, NITI Aayog's SDG Index Indicators and State specific indicators in consultation with different Departments.

5. Consolidating all this, the P&C Department, with consultation and contribution of each Department of Government of Odisha, has developed the Odisha SDG Indicator Framework (OSIF). OSIF will be the backbone of monitoring of SDGs at State level and will provide opportunities and directions to policy makers and implementers.

6. Key Features of OSIF:

- The OSIF has identified 367 Indicators across all Goals.
- Out of 367 OSIF Indicators, 269 are from NIF and 98 are beyond NIF, i.e., Odisha specific indicators.
- Indicators are categorized as Outcome, Output and Process indicators.
- OSIF includes 100 Outcome indicators, 143 Output indicators and 124 Process indicators.
- The OSIF in its current form captures Goals, Targets and Indicators (from NIF and State) and Schemes.
- It maps Indicators to Departments and to major Schemes as per Plan heads (Central Scheme, Centrally Sponsored Scheme, and State Sector Scheme).

- Odisha, uniquely, chose to colour code the Indicators so as to accommodate variations and inclusions: yellow for Indicators from NIF; green for State's own Indicators which also had an added OD identifier tag.
 - It is expected that Outcome and some Output indicators would be monitored at State level while Process Indicators would predominantly be monitored at field and Department level.
 - OSIF is a dynamic Framework which has scope for modification and change as required over the 15 year SDG span.
7. On the basis of OSIF, the following action points are next steps to improve the performance of Odisha on SDGs at national targeted levels:
- Alignment of budget and outcome budget with SDGs.
 - Preparation of SDG based Budget provision by Departments.
 - Constitution of SDG Cells at District, Urban Local Bodies (ULBs), Block, and GP level for localising the SDGs.
 - Dissemination of achievements and Success Stories related to different Goals under SDGs.
 - Capacity Development and training programmes on SDGs for State, District, Block field level officers and functionaries of the State.
 - Preparation of 'Odisha SDG Baseline Report' containing Analytics, Metadata and Data Tables.
 - Help Departments to develop and streamline 'Schematic Indicators' such that output of schemes have a correction and impact on SDG Outcomes.
 - Help Departments to monitor 'Schematic Indicators' and self assess achievements through IT platform/Mobile Apps etc.
 - Develop an IT Framework to rank Districts and further to rank Blocks within Districts/GPs within Blocks. This will also help target critical interventions.
 - Preparation of Odisha SDG Index to measure achievement of SDGs in the State.
 - Develop a Dashboard to monitor SDGs indicators on regular basis.

The State is committed to provide full support to development priorities aligning with SDGs.

With the advent of the 5T Framework (Technology, Transparency, Transformation, Teamwork through Time), Odisha will be a leading adopter of technology to deliver government services to people.



1 NO POVERTY



Goal 1



Total Targets 7

Total OSIF Indicators 29

Indicator from NIF 19

Odisha Specific Indicator 10

Type of Indicators

Outcome Indicator (OC) 7

Output Indicator (OP) 12

Process Indicator (Pro) 10



Legend:

- Indicator from NIF
- Odisha Specific Indicator

End Poverty in all its forms everywhere

Targets	Type of Indicators	OSIF Indicators	Departments	Major Schemes		
				Central Plan	Centrally Sponsored Schemes	State Sector Schemes
1	2	3	4	5	6	7
1.1 : By 2030, eradicate extreme poverty for all people everywhere, currently measured as people living on less than \$1.25 a day	OC 1	1.1.1 : Proportion of population living below the National / State poverty line.	PR & DW ST & SC Dev. H & UD SS & EPD P & C (DES)	1. Special Central Assistance to Tribal Sub - Scheme - (ST & SC Dev.) 2. Article 275 (1) - (ST & SC Dev.)	1. Mahatma Gandhi National Rural Employment Guarantee Act (MGNREGS) - (PR & DW) 2. Deendayal Antyodaya Yojana - National Rural Livelihoods Mission (DAY - NRLM) - (PR & DW) 3. Deendayal Antyodaya Yojana - National Urban Livelihoods Mission (DAY - NULM) - (H & UD) 4. Pradhan Mantri Adarsh Gram Yojana (PMAGY) - (ST & SC Dev.) 5. Pradhan Mantri Jan Vikas Karyakram (PMJVK) - (ST & SC Dev.) 6. National Social Assistance Programme (NSAP) - Indira Gandhi National Disability Pension Schemes (IGNDPS) - (SS & EPD) 7. NSAP - Indira Gandhi National Old Age Pension Scheme (IGNOAPS) - (SS & EPD) 8. NSAP - Indira Gandhi National Widow Pension Scheme (IGNWPS) - (SS & EPD) 9. NASP - National Family Benefit Scheme (NFBS) - (SS & EPD)	1. Odisha PVTG Empowerment & Livelihood Improvement Programme - (ST & SC Dev.) 2. Odisha Tribal Empowerment & Livelihoods Programme Plus (OTELP Plus) - (ST & SC Dev.) 3. Madhu Babu Pension Yojana - (SS & EPD) 4. Baristha Bunakar Sahayata Yojana (BBSY) - (HT & H) 5. Biju Pucca Ghar Yojana (BPGY) - (PR & DW) 6. Nirman Shramik Pucca Ghar Yojana (NSPGY) - (PR & DW) 7. Pucca Ghar Yojana (Mining) - (PR & DW)

Targets	Type of Indicators	OSIF Indicators	Departments	Major Schemes		
				Central Plan	Centrally Sponsored Schemes	State Sector Schemes
1	2	3	4	5	6	7
	OC 2	1.1.2 : Poverty Gap Ratio	H & UD PR & DW P & C (DES)		10. Deen Dayal Upadhyaya - Grameen Kaushalya Yojana (DDU - GKY) - (PR & DW) 11. Pradhan Mantri Awas Yojana - Gramin (PMAY - G) - (PR & DW)	
	Pro 1	1.1.3_OD : Proportion of rural youth out of total eligible youth received skill training	PR & DW			
	OP 1	1.1.4_OD : Proportion of trained rural youth getting employment	PR & DW SD & TE			
	OP 2	1.1.5_OD : Proportion of rural population provided pucca houses	PR & DW			
1.2 : By 2030, reduce at least by half the proportion of men, women and children of all ages living in poverty in all its dimensions according to national definitions		National/State Indicator not yet evolved				
1.3 : Implement nationally appropriate social protection systems and measures for all, including floors, and by 2030 achieve substantial coverage of the poor and the vulnerable	OP 3	1.3.1 : Percentage of households with any usual member covered by a health scheme or health insurance	H & FW A & FE		1. Aam Admi Bima Yojana (AABY) - (PR & DW) 2. Aam Admi Bima Yojana (AABY) - (HT & H) 3. Supplementary Nutrition Programme (SNP) - (WCD & MS)	1. Biju Swasthya Kalyan Yojana (BSKY) - (H & FW) 2. Biju Krushak Kalyan Yojana (BKKY) - (A & FE) 3. State Support for implementation of ICDS in the State - (WCD & MS)
	Pro 2	1.3.2 : Number of Beneficiaries covered under Integrated Child Development Scheme (ICDS)	WCD & MS			

Targets	Type of Indicators	OSIF Indicators	Departments	Major Schemes		
				Central Plan	Centrally Sponsored Schemes	State Sector Schemes
1	2	3	4	5	6	7
	OP 4	1.3.3 : Proportion of the population (out of total eligible population) receiving social protection benefits under Mahatma Gandhi National Rural Employment Guarantee Act (MGNREGA)	PR & DW	1. Special Central Assistance to Tribal Sub - Plan - (ST & SC Dev.) 2. Special Central Assistance to Scheduled Caste Sub - Plan - (ST & SC Dev.)	4. MGNREGS - (PR & DW)	4. Odisha PVTG Empowerment & Livelihood Improvement Programme - (ST & SC Dev.) 5. OTELP Plus - (ST & SC Dev.) 6. Mission Shakti - (WCD & MS) 7. Mission Shakti Loans - (WCD & MS) 8. MAMATA - (WCD & MS) 9. Abadana - (SS & EPD)
	Pro 3	1.3.4 : Number of Self Help Groups (SHGs) formed and provided bank credit linkage	PR & DW WCD & MS ST & SC Dev. H & UD etc		5. DAY - NRLM - (PR & DW) 6. DAY - NULM - (H & UD) 7. DAY - NULM - Shelter for Urban Homeless (SUH) - (H & UD)	
	OP 5	1.3.5 : Proportion of the population (out of total eligible population) receiving social protection benefits under Maternity Benefit	H & FW WCD & MS		8. National Health Mission (NHM) - Reproductive, Maternal, Newborn, Child and Adolescent Health (RMNCH+A) - (H & FW)	
	OP 6	1.3.6 : Number of senior citizens provided institutional assistance through Old Age Homes/Day Care Centres funded by the Government	H & UD SS & EPD			
	Pro 4	1.3.7_OD: Number of WSHGs provided financial support for enhancing credit worthiness	WCD & MS		9. Input Assistance to Women SHG (RKVY) - (F & ARD)	
	Pro 5	1.3.8_OD: Number of WSHG Federations formed and provided financial assistance for enhancing credit worthiness	WCD & MS			
	Pro 6	1.3.9_OD : Number of WSHGs benefitted under Mission Shakti Loans - State Interest Subvention Programme	WCD & MS			

Targets	Type of Indicators	OSIF Indicators	Departments	Major Schemes		
				Central Plan	Centrally Sponsored Schemes	State Sector Schemes
1	2	3	4	5	6	7
1.4 : By 2030, ensure that all men and women, in particular the poor and the vulnerable, have equal rights to economic resources, as well as access to basic services, ownership and control over land and other forms of property, inheritance, natural resources, appropriate new technology and financial services, including microfinance	OC 3	1.4.1 : Proportion of population (Rural) living in households with access to (a) Safe drinking water (b) Sanitation (Toilets)	PR & DW		1. Swachh Bharat Mission - Rural (SBM - R) - (PR & DW) 2. National Rural Drinking Water Programme (NRDWP) - (PR & DW)	1. Rural Water Supply - BASUDHA - (PR & DW) 2. Rural Water Supply Rural Infrastructure Development Fund (RIDF) - (PR & DW) 3. Odisha Mineral Bearing Areas Development Corporation (OMBADC) - (PR & DW) 4. District Mineral Foundation (DMF) - (PR & DW) 5. 4 th State Finance Commission (SFC) - (PR & DW) 6. KBK - (PR & DW) 7. Buxi Jagabandhu Assured Water Supply to Habitations (BASUDHA) - (H & UD) 8. Urban Water Supply - (H & UD) 9. Odisha Integrated Sanitation Improvement Project (EAP) - (H & UD)
	OC 4	1.4.2 : Proportion of population (Urban) living in households with access to (a) Safe drinking water (b) Sanitation (Toilets)	H & UD			
	OC 5	1.4.3 : Percentage of household with access to electricity	Energy			
	OC 6	1.4.4 : Proportion of homeless population to total population	H & UD			
					3. Atal Mission for Rejuvenation and Urban Transformation (AMRUT) - (H & UD) 4. Swachh Bharat Mission - Urban (SBM - U) - (H & UD) 5. DAY - NULM - Shelter for Urban Homeless (SUH) - (H & UD) 6. Soubhagya Yojana - (Energy)	10. Biju Grama Jyoti Yojana - (Energy) 11. Biju Saharanchal Vidyutikaran Yojana - (Energy) 12. Distributing homestead land to the homestead - less families - (R & DM) 13. Odisha Urban Housing Mission - ABBAAS - (H & UD)

Targets	Type of Indicators	OSIF Indicators	Departments	Major Schemes		
				Central Plan	Centrally Sponsored Schemes	State Sector Schemes
1	2	3	4	5	6	7
	Pro 7	1.4.5 : Number of accounts (include deposit and credit accounts) of scheduled commercial banks per 1,000 population (a) Total held by women (b) Total held by men (c) PMJDY accounts held by women (d) PMJDY accounts held by men	Finance			14. SAHAYA - (SS & EPD)
	OP 7	1.4.6 : Number of telephone subscriptions as percentage of total population	E & IT			
1.5 : By 2030, build the resilience of the poor and those in vulnerable situations and reduce their exposure and vulnerability to climate - related extreme events and other economic, social and environmental shocks and disasters	OC 7	1.5.1 : Number of deaths, missing persons and directly affected persons attributed to disasters per 100,000 population	Home R & DM (OSDMA)		1. National Cyclone Risk Mitigation Project (NCRMP) - (R & DM)	1. Plan expenditure - (Home)
	Pro 8	1.5.2 : Proportion of States that adopt and implement local disaster risk reduction strategies in line with national disaster reduction strategies	R & DM (OSDMA) H & UD Home			2. Odisha Disaster Recovery Project (EAP) - (R & DM) 3. UNNATI - The Urban Transformation Initiative - (H & UD) 4. Aahaar - (H & UD) 5. Jaga Mission - Odisha Liveable Habitat Mission - (H & UD) 6. BASUDHA - (H & UD)
	OP 8	1.5.3_OD: Construction of flood embankments to reduce exposure and environment shock due to flood to vulnerable people in flood plains. (in Km.)	WR			7. Flood protection works under State Plan Schemes - (WR) 8. Construction of check dams under Mukhyamantri Adibandha Tiari Yojana (MATY) - (WR)
					2. Infrastructure of Disaster Management - (WR) 3. National Cyclone Risk Mitigation Project (NCRMP) - (WR) 4. River Basin Management - (WR)	

Targets	Type of Indicators	OSIF Indicators	Departments	Major Schemes		
				Central Plan	Centrally Sponsored Schemes	State Sector Schemes
1	2	3	4	5	6	7
	Pro 9	1.5.4_OD: Number of check dams constructed in smaller order streams for storage of post monsoon rain water to mitigate climate related disasters.	WR		5. Flood Management & Border Areas Programme - (WR) 6. Development of Water Resources Information System - (WR) 7. Smart Cities Mission - (H & UD) 8. Atal Mission for Rejuvenation and Urban Transformation (AMRUT) - (H & UD)	
	OP 9	1.5.5_OD: Percentage of slum population provided with liveable habitats	H & UD			
	OP 10	1.5.6_OD: Percentage of urban population with access to pipe water supply	H & UD			
1.a : Ensure significant mobilization of resources from a variety of sources, including through enhanced development cooperation, in order to provide adequate and predictable means for developing countries, in particular least developed countries, to implement programmes and policies to end poverty in all its dimensions	OP 11	1.a.1 : Proportion of domestically generated resources allocated by the government (Central & State) directly to poverty reduction programmes	Finance			
	OP 12	1.a.2 : Proportion of total government spending on essential services (education, health and social protection)	Finance			
1.b : Create sound policy frameworks at the national, regional and international levels, based on pro - poor and gender - sensitive development strategies, to support accelerated investment in poverty eradication actions	Pro 10	1.b.1 : Proportion of budget earmarked under pro - poor gender specific budgeting.	Finance All Deptts			

2 ZERO
HUNGER



Goal 2



Total Targets 8

Total OSIF Indicators 31

Indicator from NIF 17

Odisha Specific Indicator 14

Type of Indicators

Outcome Indicator (OC) 11

Output Indicator (OP) 11

Process Indicator (Pro) 9



Legend:

- Indicator from NIF
- Odisha Specific Indicator

End hunger, achieve food security and improved nutrition and promote sustainable agriculture

Targets	Type of Indicators	OSIF Indicators	Departments	Major Schemes		
				Central Plan	Centrally Sponsored Schemes	State Sector Schemes
1	2	3	4	5	6	7
2.1 : By 2030, end hunger and ensure access by all people, in particular the poor and people in vulnerable situations, including infants, to safe, nutritious and sufficient food all year round	OC 1	2.1.1 : Percentage of children aged under 5 years who are underweight.	WCD & MS		1. Supplementary Nutrition Programme (SNP) - (WCD & MS)	1. State Food Security Scheme (SFSS) - Providing 5 kg rice per person per month - (FS & CW) 2. Aahaar - (H & UD)
	OP 1	2.1.2 : Proportion of population (marginalized and vulnerable) with access to food grains at subsidized prices	FS & CW		2. Cost of Intra - State Movement and handling of food grains and FPS Dealers Margin (50% equal share of GOI) - (FS & CW) 3. Annapurna Scheme - (FS & CW)	
	Pro 1	2.1.3_OD: Percentage of children covered under MDM at elementary level	S & ME ST & SC Dev. SS & EPD		4. Mid Day Meal - (S & ME)	
	Pro 2	2.1.4_OD: Percentage of people living in urban areas with access to AAHAAR (cooked food) at subsidized prices	H & UD			
	OC 2	2.1.5_OD: Percentage of low birth weight among newborns	WCD & MS			

Targets	Type of Indicators	OSIF Indicators	Departments	Major Schemes		
				Central Plan	Centrally Sponsored Schemes	State Sector Schemes
1	2	3	4	5	6	7
2.2 : By 2030, end all forms of malnutrition, including achieving, by 2025, the internationally agreed targets on stunting and wasting in children under 5 years of age, and address the nutritional needs of adolescent girls, pregnant and lactating women and older persons	OC 3	2.2.1 : Percentage of children under age 5 years who are stunted	WCD & MS		1. Supplementary Nutrition Programme (SNP) - (WCD & MS) 2. National Health Mission (NHM) - Reproductive, Maternal, Newborn, Child and Adolescent Health (RMNCH+A) - (H & FW)	1. MAMATA - (WCD & MS) 2. SAMMPURNA - (H & FW) 3. State support for implementation of ICDS in the State - (WCD & MS) 4. Biju Sishu Surakshya Yojana - (WCD & MS) 5. Care & Protection of children - (WCD & MS)
	OC 4	2.2.2 : Percentage of children under age 5 years who are wasted	WCD & MS			
	OC 5	2.2.4 : Percentage of pregnant women aged 15 - 49 years who are anaemic (Hb<12.0 g/dl)	WCD & MS H & FW			
	OC 6	2.2.5 : Percentage of Children age 6 - 59 months who are anaemic (<11.0g/dl)	H & FW			
2.3 : By 2030, double the agricultural productivity and incomes of small - scale food producers, in particular women, indigenous peoples, family farmers, pastoralists and fishers, including through secure and equal access to land, other productive resources and inputs, knowledge, financial services, markets and opportunities for value addition and non - farm employment	OC 7	2.3.1 : Agriculture productivity of wheat and rice (yield per hectare)	A & FE ST & SC Dev.	1. Pradhan Mantri Kisan Samman Nidhi (PM - KISAN) - (A & FE)	1. National Food Security Mission - Rice (NFSM) - (A & FE) 2. Bringing Green Revolution to Eastern India (BGREI) - (A & FE) 3. National Food Security Mission - Pulses - (A & FE) 4. Targetting Rice Fallow Areas - (A & FE) 5. National Food Security Mission - Additional Area under Pulses - (A & FE) 6. Sub - Mission on Agriculture Mechanization (NMAET) - (A & FE)	1. Promotion Agronomic package of practices - (A & FE) 2. Development of Agriculture through collaboration with international industries - (A & FE) 3. Intensive Agriculture programme incentivising cultivation of non - paddy crops - (A & FE) 4. Popularisation of Agriculture mechanisation - (A & FE) 5. Jananidhi & Soura Jananidhi - (A & FE) 6. Input subsidy - (A & FE) 7. Krushak Assistance for Livelihood and Income Augmentation (KALIA) - (A & FE)

Targets	Type of Indicators	OSIF Indicators	Departments	Major Schemes		
				Central Plan	Centrally Sponsored Schemes	State Sector Schemes
1	2	3	4	5	6	7
	OC 8	2.3.2 : Gross Value Added in Agriculture per worker	A & FE F & ARD P & C (DES)	2. National Programme for Dairy Development - (F & ARD) 3. Dairy Entrepreneurship Development and Employment Generation - (F & ARD) 4. Entrepreneurship Development & Employment Generation (DEDS - Subsidy & Credit linked) - (F & ARD)	7. Popularization of Agril Machinery and Equipments (RKVY) - (A & FE) 8. Increase Irrigation Potential through Individually owned Borewells and Cluster Micro River Lifts RKVY - (A & FE) 9. Pradhan Mantri Fasal Bima Yojna (PMFBY) - (Co - operation) 10. MGNREGS - (A & FE) 11. Mission for Integrated Development of Horticulture (MIDH) - (A & FE) 12. National Mission on Oilseeds and Oil Palm (NMOOP) - (A & FE) 13. Pradhan Mantri Krishi Sinchayee Yojana (PMKSY) - (A & FE) 14. National Livestock Mission - (F & ARD)	8. Plant Protection (Promotion of need based plant protection (SP) , E - pest Surveillance (RKVY) - (A & FE) 9. Special Programme for promotion of Millets in Tribal Areas - (A & FE) 10. Support to Crop Insurance in the State - (A & FE) 11. OTELP - (ST & SC DEV.) 12. OTELP Plus - (ST & SC DEV.) 13. Crop Specific Betel Vine - (A & EF) 14. Crop Specific Coconut - (A & EF) 15. Dev. of Potato, Vegetable and Spices - (A & EF) 16. Implementation of Horticulture programme in Non - Horticulture Mission districts - (A & EF) 17. Backyard Poultry Rearing - (F & ARD) 18. Layer Farming in Deep Litter - (F & ARD) 19. Genetic Up - gradation of small animals - (F & ARD) 20. Feed & Fodder Development - (F & ARD)
	Pro 3	2.3.3 : Ratio of institutional credit to agriculture to the agriculture output.	Co - operation			21. Interest Subsidy/ subvention to the Co - operative Banks/PACs for providing Crop loan - (Co - operation) 22. Interest Subsidy/ subvention to the Commercial Banks/RRBs for providing Crop loan - (Co - operation) 23. Interest Subsidy/ subvention on Agricultural Term loans provided by Co - operative Banks/Commercial Banks for providing Crop loan - (Co - operation)

Targets	Type of Indicators	OSIF Indicators	Departments	Major Schemes		
				Central Plan	Centrally Sponsored Schemes	State Sector Schemes
1	2	3	4	5	6	7
	Pro 4	2.3.4_OD: Percentage of coverage in Crop insurance	Co - operation			
	OP 2	2.3.5_OD: Percentage of PVTG Households with access to (a) PDS (b) Safe drinking water (c) Sanitation (Toilets) (d) Full Immunization (Children)	ST & SC Dev. FS & CW PR & DW WCD & MS H & FW			24. Odisha PVTG Empowerment & Livelihood Improvement Programme (OPELIP) - (ST & SC Dev.)
	OC 9	2.3.6_OD: Productivity of Pulses (yield per hectare)	A & FE			
	OC 10	2.3.7_OD: Diversification of area from Paddy to (a) Pulses (b) Oilseeds (c) Fruits and Vegetables (d) Millets	A & FE			25. Odisha Millet Mission - (A & FE)
	Pro 5	2.3.8_OD: Marketing Infrastructure Facilities	F & ARD		15. Development in inland, Marine and BW Sector New Brackish water ponds – (F & ARD)	
	OP 3	2.3.9_OD: Gross Value Added in Fisheries to total GVA	F & ARD			26. L Vannamei Culture – (F & ARD)
	OP 4	2.3.10_OD: Increase in Cropping intensity (a) Kharif (b) Rabi	WR A & FE		16. Rastriya Krushi Vikash Yojana (RKVY) - (A & FE) 17. Pradhan Mantri Krishi Sinchai Yojana (PMKSY) - (A & FE) 18. NFSM - (A & FE) 19. NMSA - (A & FE) 20. MIDH - (A & FE) 21. NMAET - (A & FE) 22. AIBP - (WR)	27. Biju Krushak Vikas Yojana (BKVY) - (WR) 28. Canal Lining and System Rehabilitation Programme (CLSRP) - (WR) 29. Nabakrushna Choudhury Secha Unnayan Yojana (NKCSUY) - (WR) 30. Parvati Giri Mega Lift (PGML) - (WR)

Targets	Type of Indicators	OSIF Indicators	Departments	Major Schemes		
				Central Plan	Centrally Sponsored Schemes	State Sector Schemes
1	2	3	4	5	6	7
	Pro 6	2.3.11_OD: Recovery of lost irrigation potential through Extension, Renovation and Modernisation (ERM) programmes, Participatory Irrigation Management (PIM) , Adoption of Rotational Irrigation system (in Ha)	WR			
2.4 : By 2030, ensure sustainable food production systems and implement resilient agricultural practices that increase productivity and production, that help maintain ecosystems, that strengthen capacity for adaptation to climate change, extreme weather, drought, flooding and other disasters and that progressively improve land and soil quality	OC 11	2.4.1 : Proportion of degraded land to net sown area	A & FE		1. PMKSY: Watershed Development - (A & FE) 2. PMKSY: Per Drop More Crop - (A & FE) 3. Rainfed Area Development Component of National Mission for Sustainable Agriculture - (A & FE) 4. Sub - mission on Agro forestry under NMSA - (A & FE)	1. Management of Soil Health - (A & FE)
	OP 5	2.4.2 : Percentage of farmers issued Soil Health Card	A & FE		5. Soil Health Management & Soil Health Card (National Mission on Sustainable Agriculture (NMSA)) - (A & FE)	
	OP 6	2.4.3 : Percentage of net area under organic farming	A & FE		6. Pramaparagat Krishi Vikas Yojana (PKVY) - National Mission for Sustainable Agriculture (NMSA) - (A & FE)	

Targets	Type of Indicators	OSIF Indicators	Departments	Major Schemes		
				Central Plan	Centrally Sponsored Schemes	State Sector Schemes
1	2	3	4	5	6	7
2.5 : By 2020, maintain the genetic diversity of seeds, cultivated plants and farmed and domesticated animals and their related wild species, including through soundly managed and diversified seed and plant banks at the national, regional and international levels, and promote access to and fair and equitable sharing of benefits arising from the utilization of genetic resources and associated traditional knowledge, as internationally agreed	OP 7	2.5.1 : No. of accessions conserved in the base collection (- 18 degree Celsius) at National / State Gene banks	A & FE	1. Rashtriya Gokul Mission - (F & ARD)	1. Rejuvenation and Molecular caharacterization of Farmers' veraities (RKVY) - (A & FE)	1. Seabass Culture – (F & ARD) 2. Crap Mola culture – (F & ARD) 3. GIFT Tilapia Culture – (F & ARD) 4. Crap Intensification – (F & ARD)
	OP 8	2.5.2 : Number of conservation of germplasm	F & ARD A & FE			
	OP 9	2.5.4_OD: Diversification in pisciculture: Growth in (a) Seabass culture (b) Crap mola culture (c) GIFT Tilapia culture (d) Crap intensification	F & ARD			
2.a : Increase investment, including through enhanced international cooperation, in rural infrastructure, agricultural research and extension services, technology development and plant and livestock gene banks in order to enhance agricultural productive capacity in developing countries, in particular least developed countries	Pro 7	2.a.1 : Percentage share of Intellectual Property Product (Research & Development) to total GVA in Agriculture, Forestry and Fishing	A & FE P & C (DES)			

Targets	Type of Indicators	OSIF Indicators	Departments	Major Schemes		
				Central Plan	Centrally Sponsored Schemes	State Sector Schemes
1	2	3	4	5	6	7
	OP 10	2.a.2 : Percentage of Government investment (Gross Fixed Capital Formation) in agriculture to GVA in agriculture	A & FE P & C (DES)			1. Reactivation of Fisheries Cooperative Societies – (F & ARD) 2. Cage Culture – (F & ARD)
	Pro 8	2.a.3_OD: Number of Fisherman Cooperative society given assistance leading to credit worthiness	F & ARD			
	Pro 9	2.a.4_OD: Number of reservoirs covered under Fisheries Development	F & ARD			
2.b : Correct and prevent trade restrictions and distortions in world agricultural markets, including through the parallel elimination of all forms of agricultural export subsidies and all export measures with equivalent effect, in accordance with the mandate of the Doha Development Round		National / State Indicator not yet evolved				

Targets	Type of Indicators	OSIF Indicators	Departments	Major Schemes		
				Central Plan	Centrally Sponsored Schemes	State Sector Schemes
1	2	3	4	5	6	7
2.c : Adopt measures to ensure the proper functioning of food commodity markets and their derivatives and facilitate timely access to market information, including on food reserves, in order to help limit extreme food price volatility	OP 11	2.c.1 : Percentage of Agriculture Mandis enrolled in e - market	Co - operation			1.Agricultural Marketing - Development of Agricultural Marketing Infrastructure - (Co - operation) 2.Free Mobile Phones to farmers to access market information - (Co - operation) 3.Corpus Fund for Odisha State Co - operative Marketing Federation Ltd. - Interest Free Loan for Procurement - (Co - operation)

3 GOOD HEALTH AND WELL BEING



Goal 3



Total Targets 13

Total OSIF Indicators 46

Indicator from NIF 29

Odisha Specific Indicator 17

Type of Indicators

Outcome Indicator (OC) 14

Output Indicator (OP) 25

Process Indicator (Pro) 7



Legend:

- Indicator from NIF
- Odisha Specific Indicator

Ensure healthy lives and promote well being for all at all age

Targets	Type of Indicators	OSIF Indicators	Departments	Major Schemes		
				Central Plan	Centrally Sponsored Schemes	State Sector Schemes
1	2	3	4	5	6	7
3.1: By 2030, reduce the global maternal mortality ratio to less than 70 per 100000 live births.	OC 1	3.1.1: Maternal Mortality Ratio	H & FW		1. NHM - RMNCH+A & Health System Strengthening - (H & FW) 2. Supplementary Nutrition Programme (SNP) - (WCD & MS)	1. Sishu Abong Matru Mrutyuhara Purna Nirakarana Abhijana (SAMPURNNA) - (H & FW) 2. MAMTA - (WCD & MS)
	OP 1	3.1.2: Percentage of births attended by skilled health personnel (Period 5 years)	H & FW			
	OP 2	3.1.3: Percentage of births attended by skilled health personnel out of Home delivery (Period 1 year)	H & FW			
	OP 3	3.1.4: Percentage of women aged 15 - 49 years with a live birth, for last birth, who received antenatal care, four times or more (Period 5 years/1 year)	H & FW			
	Pro 1	3.1.5_OD: Percentage of mothers who received postnatal care from a Doctor/ Nurse/ LHV/ ANM/ other health personnel within 2 days of delivery	H & FW			

Targets	Type of Indicators	OSIF Indicators	Departments	Major Schemes		
				Central Plan	Centrally Sponsored Schemes	State Sector Schemes
1	2	3	4	5	6	7
3.2: By 2030, end preventable deaths of newborns and children under 5 years of age, with all countries aiming to reduce neonatal mortality to at least as low as 12 per 1,000 live births and under - 5 mortality to at least as low as 25 per 1,000 live births	OC 2	3.2.1: Under - five Mortality Rate	H & FW		1. NHM - RMNCH+A & Health System Strengthening - (H & FW) 2. ICDS - (WCD & MS) 3. Supplementary Nutrition Programme (SNP) - (WCD & MS)	1. SAMPURNNA - (H & FW)
	OC 3	3.2.2: Neonatal mortality rate	H & FW			
	OP 4	3.2.3: Percentage of children aged 12 - 23 months fully immunised (BCG, Measles and three doses of Pentavalent vaccine)	H & FW WCD & MS			
	OC 4	3.2.4_OD: Infant Mortality Rate (IMR)	H & FW			
3.3: By 2030, end the epidemics of AIDS, tuberculosis, malaria and neglected tropical diseases and combat hepatitis, water - borne diseases and other communicable diseases	OP 5	3.3.1: Number of new HIV infections per 1,000 uninfected population	H & FW		1. NACP - (H & FW) 2. NHM - RNTCP - (H & FW) 3. NHM - NVBDCP - (H & FW) 4. NHM - NLEP - (H & FW)	1. Durgama Anchalare Malaria Nirakaran - (DAMAN) - (H & FW)
	OC 5	3.3.2: Tuberculosis incidence per 100,000 population	H & FW			
	OC 6	3.3.3: Malaria incidence per 1,000 population	H & FW			
	OC 7	3.3.5: Dengue: Case Fatality Rate (CFR)	H & FW			
	OC 8	3.3.8: Number of new cases of Lymphatic Filariasis (LF)	H & FW			
	OC 9	3.3.9: The proportion of grade - 2 cases amongst new cases of Leprosy	H & FW			
	OC 10	3.3.10: HIV Prevalence Rate	H & FW			
	OP 6	3.3.11_OD: Reduction of malaria positive cases over previous year	H & FW			
	OP 7	3.3.12_OD: Treatment success rate of new microbiologically confirmed TB cases	H & FW			
3.4 By 2030, reduce by one third premature mortality from non communicable diseases through prevention and treatment and promote mental health and well - being	OC 11	3.4.2: Suicide mortality rate	Home			
	OP 8	3.4.3: Percentage distribution of leading cause groups of deaths	Home			
	OC 12	3.4.4_OD: Prevalence of cancer	H & FW			

Targets	Type of Indicators	OSIF Indicators	Departments	Major Schemes		
				Central Plan	Centrally Sponsored Schemes	State Sector Schemes
1	2	3	4	5	6	7
3.5 Strengthen the prevention & Treatment of substance abuse, including narcotic drug abuse & harmful use of alcohol	OP 9	3.5.2: Number of persons treated in de-addiction centres	Home H & FW			1. De-addiction Scheme - (H & FW)
3.6 By 2020, halve the number of global deaths and injuries from road traffic accidents	OC 13	3.6.1: Death rate due to road traffic accidents	Home C & T			
3.7 By 2030, ensure universal access to sexual and reproductive health - care services, including for family planning, information and education, and the integration of reproductive health into national strategies and programmes	OP 10	3.7.1: Percentage of currently married women (15 - 49 years) who use any modern family planning methods	H & FW		1. NHM - RMNCH+A & Health System Strengthening - (H & FW)	1. SAMMPURNA - (H & FW)
	OP 11	3.7.2: Percentage of women aged 15 - 19 years who were already mothers or pregnant.	H & FW			
	OP 12	3.7.3: Percentage of Institutional Births (5 years/ 1 years)	H & FW			
	OC 14	3.7.4_OD: Total Fertility Rate	H & FW			
	Pro 2	3.7.5_OD: Percentage of women having at least three years of birth interval (>36 months)	H & FW			
3.8 Achieve universal health coverage, including financial risk protection, access to quality essential health - care services and access to safe, effective, quality and affordable essential medicines and vaccines for all	OP 13	3.8.1: Percentage of currently married women (15 - 49 years) who use any modern family planning methods (Repeat in 3.7.1)	H & FW		1. NHM - RNTCP - (H & FW) 2. NACP - (H & FW)	
	OP 14	3.8.2: Percentage of TB cases successfully treated (cured plus treatment completed) among TB cases notified to the national health authorities during a specified period.	H & FW			
	OP 15	3.8.3: Percentage of people living with HIV currently receiving ART among the detected number of adults and children living with HIV.	H & FW			

Targets	Type of Indicators	OSIF Indicators	Departments	Major Schemes		
				Central Plan	Centrally Sponsored Schemes	State Sector Schemes
1	2	3	4	5	6	7
	OP 16	3.8.7: Prevalence of current tobacco uses among men and women aged 15 – 49 years	H & FW			1. Corpus Fund , Place Based Incentive - (H & FW) 2. Exploring Innovation in Health Sector (Swasthya Sahaya) - (H & FW) 3. Strengthening of Ancillary Services at Public Health Facilities (Nirmal) - (H & FW) 4. Free Sanitary Napkins Distribution Scheme (Khusi) - (H & FW) 5. SAMPURNNA - (H & FW) 6. Mobile Health Units (Swasthya Sanjog) - (H & FW) 7. Universal Eye Healthcare Programme (Sunetra) - (H & FW) 8. DAMAN - (H & FW) 9. Place Based Incentives - (H & FW) 10. Strengthening of Casualty, Emergency and Trauma Care - (H & FW) 11. Mukhya Mantri Swasthy Seva Mission - (H & FW) 12. Free Mental Health Care - (H & FW) 13. Biju Swasthya Kalyan Yojana (BSKY) - (H & FW) 14. Tele Medicines - (H & FW) 15. Bio Medical Waste Management - (H & FW) 16. Food Safety Programme - (H & FW)
	OP 17	3.8.8: Total governmental physicians, nurses and midwives per 100000 population	H & FW			
	Pro 3	3.8.9_OD: Percentage of population relying on public health facility	H & FW			

Targets	Type of Indicators	OSIF Indicators	Departments	Major Schemes		
				Central Plan	Centrally Sponsored Schemes	State Sector Schemes
1	2	3	4	5	6	7
	OP 18	3.8.10_OD: Percentage of children age 12 - 23 months who received most / full vaccinations in public health facility	H & FW		3. NHM - RI - (H & FW) 4. NHM - NPCDCS - (H & FW)	17. Niramaya – Free Drug Scheme - (H & FW) 18. Nidan - Free Diagnostic & Dialysis Services - (H & FW) 19. Sahay - Free Dialysis Services - (H & FW) 20. Free Cancer Care and Chemotherapy Services - (H & FW) 21. Free OPD IPD Services - (H & FW) 22. Free Blood Services - (H & FW)
	Pro 4	3.8.11_OD: Percentage of Public Health Facilities providing Free Drugs (Out of Total Facilities from Sub centre to MCH level)	H & FW			
	Pro 5	3.8.12_OD: Percentage of Facilities providing Free Diagnostic Services (Out of Total Facilities from Sub centre to MCH level)	H & FW			
	Pro 6	3.8.13_OD: Percentage of District Headquarters Hospitals providing free dialyses services (Out of total DHHs in the State)	H & FW			
	OP 19	3.8.14_OD: Percentage of District Headquarters Hospitals providing follow up chemotherapy services (Out of total District Headquarters Hospitals in the State)	H & FW			
	Pro 7	3.8.15_OD: Percentage of Public Health facilities exempted service charges (Under Universal Health Coverage)	H & FW			
	OP 20	3.8.16_OD: Percentage of patients received free blood (Out of total requisition received from treating physicians for free blood)	H & FW			
3.9: By 2030, substantially reduce the number of deaths and illnesses from hazardous chemical and air, water and soil pollution and contamination.	OP 21	3.9.3_OD: Removal of Water Hyacinth from stagnant zones of streams and rivers (in sq m)	WR		1. National River Conservation Programme - (WR) 2. Research & Development and Implementation of National Water Mission - (WR)	1. River mouth dredging and water hyacinth removal under State Plan Scheme - (WR)
	OP 22	3.9.4_OD: Flushing of Moribund River Channels (in MCM)	WR			

Targets	Type of Indicators	OSIF Indicators	Departments	Major Schemes		
				Central Plan	Centrally Sponsored Schemes	State Sector Schemes
1	2	3	4	5	6	7
3.a : Strengthen the implementation of the World Health Organization Framework Convention on Tobacco Control in all countries, as appropriate	OP 23	3.a.1: Prevalence of current tobacco uses among men and women aged 15 – 49 years (Repeat in 3.8.7)	H & FW			
3.b : Support the research and development of vaccines and medicines for the communicable and non - communicable diseases that primarily affect developing countries, provides access to affordable essential medicines and vaccines, in accordance with the Doha Declaration on the TRIPS Agreement and Public Health, which affirms the right of developing countries to use to the full the provisions in the Agreement on Trade - Related Aspects of Intellectuals Property Rights regarding flexibilities to protect public health, and, in particular, provide access to medicines for all.						
3.c : Substantially increase health finance and the recruitment, development, training and retention of health workforce in the developing counties, especially in least developed countries and small island developing states.	OP 24	3.c.1 : Total Governmental physicians, nurses and midwives per 100000 population (Repeat in 3.8.8)	H & FW			1. Corpus Fund Place Based Incentives Schemes - (H & FW)
	OP 25	3.c.2 : Percentage of government spending on gross capital formation (GCF) in health sector to GDP	H & FW P & C (DES)			
3.d: Strengthen the capacity of all countries, in particular developing countries, for early warning, risk reduction and management of national and global health risks		National / State indicator not yet evolved				

4 QUALITY EDUCATION



Goal 4



Total Targets 10

Total OSIF Indicators 27

Indicator from NIF 20

Odisha Specific Indicator 7

Type of Indicators

Outcome Indicator (OC) 9

Output Indicator (OP) 10

Process Indicator (Pro) 8



Legend:

- Indicator from NIF
- Odisha Specific Indicator

Ensure inclusive and equitable quality education and promote lifelong learning opportunities for all

Targets	Type of Indicators	OSIF Indicators	Departments	Major Schemes		
				Central Plan	Centrally Sponsored Schemes	State Sector Schemes
1	2	3	4	5	6	7
4.1 : By 2030, ensure that all girls and boys complete free, equitable and quality primary and secondary education leading to relevant and effective learning outcomes	OC 1	4.1.1 : Net Enrolment Ratio in primary and upper primary education	S & ME ST & SC Dev.		1. Samagra Shiksh - (S & ME)	1. Pre - matric scholarship for SC - (ST & SC Dev.) 2. Pre - matric scholarship for ST - (ST & SC Dev.) 3. Pre - matric scholarship for OBC - (ST & SC Dev.) 4. Post - matric scholarship for ST - (ST & SC Dev.) 5. Post - matric scholarship for SC - (ST & SC Dev.) 6. Post - matric scholarship for OBC - (ST & SC Dev.) 7. Residential Schooling facility - (ST & SC Dev.) 8. Anwesha - (ST & SC Dev.) 9. Urban Hostel programme (Akankhya) - (ST & SC Dev.) 10. State Support for Samagra Shiksha - (S & ME) 11. State Support for MDM - (S & ME)
	OC 2	4.1.2 : Adjusted Net Enrolment Ratio in primary, upper primary and secondary education	S & ME ST & SC Dev.			12. Elementary Education - School Bag Kits for primary school students - (S & ME) 13. School Uniform for APL Boys - (S & ME) 14. Scholarship - (S & ME)

Targets	Type of Indicators	OSIF Indicators	Departments	Major Schemes		
				Central Plan	Centrally Sponsored Schemes	State Sector Schemes
1	2	3	4	5	6	7
	OC 3	4.1.3 : Gross Enrolment Ratio in higher secondary education	S & ME			15. Secondary Education - Distribution of free Bicycles - (S & ME)
						16. Mo School Abhiyan - (S & ME)
						17. Odisha Adarsha Vidyalaya - (S & ME)
						18. Scholarship - (S & ME)
						19. Gangadhar Meher Sikshya Manak Brudhi Yojana (GMSMY) - (S & ME)
	OP 1	4.1.4 : Percentage of students in grade 3, 5, 8 and 10 achieving at least a minimum proficiency level in terms of nationally defined learning outcomes to be attained by pupils at the end of each of above grades	S & ME ST & SC Dev.			
	Pro 1	4.1.5 : Gross intake ratio to the last grade (primary, upper primary and secondary)	S & ME			
	OP 2	4.1.6 : Proportion of students enrolled in Grade 1 who reaches last grade or primary/upper primary/secondary levels	S & ME ST & SC Dev.			
	OC 4	4.1.7 : Out of school ratio (primary, upper primary, elementary, secondary and higher secondary)	S & ME			
	Pro 2	4.1.8 : Number of years (i) free and (ii) compulsory education guaranteed in legal frameworks	S & ME ST & SC Dev.			
	OC 5	4.1.9_OD: Average annual drop - out rate at primary / secondary level (%)	S & ME			

Targets	Type of Indicators	OSIF Indicators	Departments	Major Schemes		
				Central Plan	Centrally Sponsored Schemes	State Sector Schemes
1	2	3	4	5	6	7
4.2 : By 2030, ensure that all girls and boys have access to quality early childhood development, care and pre - primary education so that they are ready for primary education	OC 6	4.2.1 : Participation rate in organized learning one year before official primary entry	WCD & MS S & ME		1. ICDS (Pre school) - (WCD & MS) 2. ICDS (Pre school) internal fund - (WCD & MS)	
	OC 7	4.2.2 : Gross early childhood education enrolment ratio	WCD & MS			
	Pro 3	4.2.3_OD : Proportion of AWCs out of total tribal AWCs imparting mother tongue based (tribal) pre school education	WCD & MS			
4.3 : By 2030, ensure equal access for all women and men to affordable and quality technical, vocational and tertiary education, including university	Pro 4	4.3.1 : Participation rate of youth and adults in formal and non - formal education and training in the previous 12 months	SD & TE		1.Rashitiya Uchhatar Sikhya Avijan - RUSA - (SD & TE) 2.Technical Education Quality Improvement Programme (TEQIP) - (SD & TE) 3. Rashtriya Uchchatar Shiksha Abhiyan - (HE)	1. SUDAKHYA Scheme - (SD & TE) 2.Higher Technical Education Programme - (SD & TE) 3. ITI/Polytechnic Education - (SD & TE) 4. National Apprentichip Training Scheme - (SD & TE) 5. Odisha Higher Education Program for Excellence & Equity (OHEPEE) : World Bank Assistance - (HE)
	Pro 5	4.3.2 : Proportion of male - female enrolled in higher education, technical and vocational education	SD & TE HE			
	OP 3	4.3.3 : Gross enrolment ratio for tertiary education	SD & TE HE			
4.4 : By 2030, substantially increase the number of youth and adults who have relevant skills, including technical and vocational skills, for employment, decent jobs and entrepreneurship	OC 8	4.4.1 : Proportion of computer literate adults	HE SD & TE S & ME ST & SC Dev.		1.Rashitiya Uchhatar Sikhya Avijan - RUSA - (SD & TE) 2.Technical Education Quality Improvement Programme (TEQIP) - (SD & TE)	1.Higher Technical Education Programme - (SD & TE) 2. ITI/Polytechnic Education - (SD & TE) 3. National Apprentichip Training Scheme - (SD & TE)

Targets	Type of Indicators	OSIF Indicators	Departments	Major Schemes		
				Central Plan	Centrally Sponsored Schemes	State Sector Schemes
1	2	3	4	5	6	7
	Pro 6	4.4.2_OD: Gross Vocational Education enrolment ratio at higher secondary level	S & ME			4. Vocational Education - (S & ME)
	Pro 7	4.4.3_OD: No of persons trained in Skill development related to water conservation and management	WR PR & DW A & FE F & E WCD & MS S & ME HE ST & SC Dev.			5. Roof Top Rainwater Harvesting Programs - (WR) 6. Training JalSathis in Tank areas for operation and maintenance of ground water recharge shafts, solar pumping system etc. - (WR)
	OP 4	4.4.4_OD: Proportion of computer literate youth (15 - 24 years)	HE SD & TE S & ME ST & SC Dev.			
4.5 : By 2030, eliminate gender disparities in education and ensure equal access to all levels of education and vocational training for the vulnerable, including persons with disabilities, indigenous peoples and children in vulnerable situations	OP 5	4.5.1 : Enrolment ratio of children with disabilities	S & ME SS & EPD		1. Samagra Shiksha - (S & ME) 2. Secondary Education - Scheme for providing education to Madrasas, Minorities and Disabled - (S & ME) 3. Rashtriya Uchchatar Shiksha Abhiyan - (HE)	1. Elementary Education - Education for Children with Special need - (S & ME) 2. Grant - in aid to special schools and colleges (PwDs) - (SS & EPD)
	OP 6	4.5.2 : Gender Parity indices for (a) Primary education (b) Secondary education (c) Higher Secondary education (d) Tertiary education	S & ME ST & SC Dev. HE			
	Pro 8	4.5.3_OD : Number of students enrolled in Adarsha Vidyalaya to intake capacity	S & ME			3. Odisha Adarsha Vidyalaya - (S & ME)

Targets	Type of Indicators	OSIF Indicators	Departments	Major Schemes		
				Central Plan	Centrally Sponsored Schemes	State Sector Schemes
1	2	3	4	5	6	7
4.6 : By 2030, ensure that all youth and a substantial proportion of adults, both men and women, achieve literacy and numeracy	OC 9	4.6.1 : Literacy rate of youth in the age group of 15 - 24 years.	SD & TE			
4.7 : By 2030, ensure that all learners acquire the knowledge and skills needed to promote sustainable development, including, among others, through education for sustainable development and sustainable lifestyles, human rights, gender equality, promotion of a culture of peace and non - violence, global citizenship and appreciation of cultural diversity and of culture's contribution to sustainable development		National / State Indicator not yet evolved				
4.a : Build and upgrade education facilities that are child, disability and gender sensitive and provide safe, non - violent, inclusive and effective learning environments for all	OP 7	4.a.1 : Proportion of schools with access to: (a) electricity; (b) computers for pedagogical purposes; (c) adapted infrastructure and materials for students with disabilities/ disabled friendly ramp and toilets; (d) basic drinking water; (e) single - sex basic sanitation facilities; and (f) basic hand washing facilities (as per the WASH indicator definitions)	S & ME ST & SC Dev. SS & EPD		1. Samagra Shiksha - (S & ME)	1. Residential schooling facility - (ST & SC Dev.)

Targets	Type of Indicators	OSIF Indicators	Departments	Major Schemes		
				Central Plan	Centrally Sponsored Schemes	State Sector Schemes
1	2	3	4	5	6	7
4.b : By 2020, substantially expand globally the number of scholarships available to developing countries, in particular least developed countries, small island developing States and African countries, for enrolment in higher education, including vocational training and information and communications technology, technical, engineering and scientific programmes, in developed countries and other developing countries	OP 8	4.b.1_OD: Number of Scholarships available in tertiary education	HE			1. e - Medhabruti - (HE) 2. Urban Hostel programme (Akankhya) - (ST & SC Dev.) 3. Post - matric scholarship for ST - (ST & SC Dev.) 4. Post - matric scholarship for SC - (ST & SC Dev.) 5. Post - matric scholarship for OBC - (ST & SC Dev.)
4.c : By 2030, substantially increase the supply of qualified teachers, including through international cooperation for teacher training in developing countries, especially least developed countries and small island developing States	OP 9	4.c.1 : Proportion of trained teachers, by education level (pre - primary, primary, upper primary, elementary, secondary and higher secondary education)	S & ME ST & SC Dev. HE		1.Samagra Shiksha - (S & ME)	1. Primary Teachers – (ST & ST Dev.) 2. Secondary school teachers – (ST & ST Dev.) 3. Higher Secondary school teachers – (ST & ST Dev.) 4. Teacher's Education - Promotion of Teachers Education - (S & ME)
	OP 10	4.c.2 : Pupil/trained teacher ratio by education level	S & ME ST & SC Dev.			

5 GENDER
EQUALITY



Goal 5



Total Targets 9

Total OSIF Indicators 29

Indicator from NIF 26

Odisha Specific Indicator 3

Type of Indicators

Outcome Indicator (OC) 6

Output Indicator (OP) 15

Process Indicator (Pro) 8



Legend:

- Indicator from NIF
- Odisha Specific Indicator

Achieve gender equality and empower all women and girls

Targets	Type of Indicators	OSIF Indicators	Departments	Major Schemes		
				Central Plan	Centrally Sponsored Schemes	State Sector Schemes
1	2	3	4	5	6	7
5.1 : End all forms of discrimination against all women and girls everywhere	OP 1	5.1.1 : Rate of crimes against women per every 1,00,000 female population	Home		1. Beti Bachao Beti Padhao - (WCD & MS) 2. Swadhar Greh (Rehabilitation of women in difficult Circumstances) - (WCD & MS) 3. Ujjawala - (WCD & MS) 4. Odisha State commission for protection of Child Rights (OSCPCR) - (WCD & MS) 5. One stop Center - (WCD & MS)	1. Biju Kanya Ratna Yojana - (WCD & MS) 2. Construction of Working women's Hostel - (WCD & MS) 3. Grants to State Commission for Women - (WCD & MS) 4. Prevention of Violence Against Women - (WCD & MS) 5. Support to Social Welfare Board for Awareness Campaign on declining child sex ratio - (WCD & MS) 6. Grants to State Commission for women - (WCD & MS) 7. State Human Rights Commission - (Law)
	Pro 1	5.1.2 : Proportion of women subjected to dowry related offences to total crime against women	Home			
	OC 1	5.1.3 : Sex Ratio at Birth	WCD & MS			
	Pro 2	5.1.4 : Whether or not legal framework are in place to promote, enforce and monitor equality and non - discrimination on the basis of sex.	WCD & MS			
	OP 2	5.1.5_OD: Average female to male ratio of average wages/ salaries received per day by regular wage/salaried employees of age 15 - 59 years for rural and urban	L & ESI			

Targets	Type of Indicators	OSIF Indicators	Departments	Major Schemes		
				Central Plan	Centrally Sponsored Schemes	State Sector Schemes
1	2	3	4	5	6	7
5.2 : Eliminate all forms of violence against all women and girls in the public and private spheres, including trafficking and sexual and other types of exploitation	OP 3	5.2.1 : Proportion of crime against women to total crime reported in the state during the calendar year	Home			1.Biju Kanya Ratna - (WCD & MS) 2.Biju Sishu Surakshya Yojana - (WCD & MS)
	OP 4	5.2.2 : Proportion of sexual crimes against women to total crime against women during the calendar year	Home			
	OP 5	5.2.3 : Proportion of cruelty/ physical violence on women by husband or his relative to total crime against women during the calendar year	Home			
	OP 6	5.2.4 : Proportion of sexual crime against girl children to total crime against children during the calendar year	Home			
	OP 7	5.2.5 : Proportion of trafficking of girl children to total children trafficked during the calendar year	Home			
	Pro 3	5.2.6 : Percentage of currently partnered girls and women aged 15 - 49 years who have experienced physical and / or sexual violence by their current or previous husband in the last 12 months	WCD & MS			
	OC 2	5.2.7 : Child Sex Ratio (0 - 6 Years)	H & FW			3. Support to Social Welfare Board for Awareness Campaign on declining child sex ratio - (WCD & MS)

Targets	Type of Indicators	OSIF Indicators	Departments	Major Schemes		
				Central Plan	Centrally Sponsored Schemes	State Sector Schemes
1	2	3	4	5	6	7
5.3 : Eliminate all harmful practices, such as child, early and forced marriage and female genital mutilation	OP 8	5.3.1 : Proportion of cases reported under the Prohibition of Child Marriage Act (early marriage of children below 18 years of age) to total crime against children.	Home WCD & MS			1. Child Welfare - Care & Protection of Children - (WCD & MS)
	OC 3	5.3.2 : Proportion of women aged 20 - 24 years who were married or in a union before age 18	WCD & MS			
5.4 : Recognize and value unpaid care and domestic work through the provision of public services, infrastructure and social protection policies and the promotion of shared responsibility within the household and the family as nationally appropriate						
5.5 : Ensure women's full and effective participation and equal opportunities for leadership at all levels of decision - making in political, economic and public life	OC 4	5.5.1 : Proportion of seats held by women /women SHG member in national Parliament, State Legislation and Local Self Government (a) National Parliament (b) State Legislation (c) Local Self Government (d) Women SHG member in PRI	WCD & MS PA PR & DW		1. Mission Shakti - (WCD & MS)	1. PIM through State plan - (WR)
	OC 5	5.5.2 : Proportion of women in managerial positions including women in Board of Directors, in listed companies	Industry MSME			
	Pro 4	5.5.3_OD: Presence of women office bearers/ members in PaniPanchayats (WUA) (no of women)	WR			

Targets	Type of Indicators	OSIF Indicators	Departments	Major Schemes		
				Central Plan	Centrally Sponsored Schemes	State Sector Schemes
1	2	3	4	5	6	7
5.6 : Ensure universal access to sexual and reproductive health and reproductive rights as agreed in accordance with the Programme of Action of the International Conference on Population and Development and the Beijing Platform for Action and the outcome documents of their review conferences	OP 9	5.6.1 : Percentage of currently married women (15 - 49 years) who use modern methods of family planning (Repeat 3.7.1)	H & FW		1. NHM - RMNCH+A & Health System Strengthening - (H & FW)	1. SAMMPURNA - (H & FW)
	OP 10	5.6.2 : Unmet need for family planning for currently married women aged 15 - 49 years	H & FW			
	OP 11	5.6.3 : Proportion of population aged 15 - 24 years with comprehensive correct knowledge of HIV / AIDS	H & FW			
5.a : Undertake reforms to give women equal rights to economic resources, as well as access to ownership and control over land and other forms of property, financial services, inheritance and natural resources, in accordance with national laws	OC 6	5.a.1 : Operational land holdings - gender wise	A & FE ST & SC Dev. P & C (DES)	1. Article 275 (1) - (ST & SC Dev.)		
	OP 12	5.a.2 : Percentage of female agricultural workers among female workers	A & FE P & C (DES)			

Targets	Type of Indicators	OSIF Indicators	Departments	Major Schemes		
				Central Plan	Centrally Sponsored Schemes	State Sector Schemes
1	2	3	4	5	6	7
	OP 13	5.a.5 : Percentage of bank linked exclusive women SHGs to total Bank linked SHGs	WCD & MS PR & DW ST & SC Dev.	2. Special Central Assistance to Tribal Sub - plan Scheme - (ST & SC Dev.) 3. Special Central Assistance to Scheduled Caste Sub - Plan - (ST & SC Dev.)	1. Deendayal Antyodaya Yojana - National Rural Livelihoods Mission (DAY - NRLM) - (PR & DW)	1. Financial Assistance to WSHGs & their Federations under Mission Shakti - (WCD & MS) 2. OPELIP - (ST & SC Dev.) 3. OTELP Plus - (ST & SC Dev.) 4. Mission Shakti - (WCD & MS) 5. MAMATA - (WCD & MS) 6. ICDS - (WCD & MS)
	Pro 5	5.a.6 : Percentage of adults having an account at a formal financial institution	WCD & MS Finance			
	Pro 6	5.a.7 : Percentage of women having an account at a formal financial institution	WCD & MS Finance			
	Pro 7	5.a.8 : No. of borrowers per 1,00,000 adults (Male & Female - wise)	Finance			
5.b : Enhance the use of enabling technology, in particular information and communications technology, to promote the empowerment of women	OP 14	5.b.1 : Percentage of women employed in IT and ITeS industry	E & IT			

Targets	Type of Indicators	OSIF Indicators	Departments	Major Schemes		
				Central Plan	Centrally Sponsored Schemes	State Sector Schemes
1	2	3	4	5	6	7
5.c : Adopt and strengthen sound policies and enforceable legislation for the promotion of gender equality and the empowerment of all women and girls at all levels	OP 15	5.c.1 : Number of Central Ministries / State Departments having Gender Budget Cells (GBCs)	WCD & MS			
	Pro 8	5.c.2_OD: State Policy on Women and Girls	WCD & MS			

6 CLEAN WATER AND SANITATION



Goal 6



Total Targets 8

Total OSIF Indicators 27

Indicator from NIF 18

Odisha Specific Indicator 9

Type of Indicators

Outcome Indicator (OC) 6

Output Indicator (OP) 9

Process Indicator (Pro) 12



Legend:

- Indicator from NIF
- Odisha Specific Indicator

Ensure availability and sustainable management of water and sanitation for all

Targets	Type of Indicators	OSIF Indicators	Departments	Major Schemes		
				Central Plan	Centrally Sponsored Schemes	State Sector Schemes
1	2	3	4	5	6	7
6.1 : By 2030, achieve universal and equitable access to safe and affordable drinking water for all	OC 1	6.1.1 : Percentage of population having safe and adequate drinking water within their premises.	PR & DW H & UD		1. National Rural Drinking Water Programme (NRDWP) - (PR & DW) 2. Atal Mission for Rejuvenation and Urban Transformation (AMRUT) - (H & UD)	1. Rural Water Supply - BASUDHA - (PR & DW) 2. Rural Water Supply Rural Infrastructure Development Fund (RIDF) - (PR & DW) 3. Odisha Mineral Bearing Areas Development Corporation (OMBADC) - (PR & DW) 4. District Mineral Foundation (DMF) - (PR & DW) 5. 4th State Finance Commission (SFC) - (PR & DW) 6. KBK - (PR & DW) 7. BASUDHA - (H & UD) 8. Urban Water Supply - (H & UD) 9. OPELIP - (ST & SC Dev.)
	OC 2	6.1.2 : Percentage of population using an improved drinking water source (Rural)	PR & DW			

Targets	Type of Indicators	OSIF Indicators	Departments	Major Schemes		
				Central Plan	Centrally Sponsored Schemes	State Sector Schemes
1	2	3	4	5	6	7
6.2 : By 2030, achieve access to adequate and equitable sanitation and hygiene for all and end open defecation, paying special attention to the needs of women and girls and those in vulnerable situations	OC 3	6.2.1 : Proportion of households having access to toilet facility (Urban & Rural)	PR & DW H & UD	1. Article 275 (1) - (ST & SC Dev.)	1. Swachha Bharat Abhiyan (G) - (PR & DW) 2. Samagra Shiksh - (S & ME) 3. Swachha Bharat Mission (Urban) - (H & UD)	1. Odisha Integrated Sanitation Improvement Project (EAP) - (H & UD)
	OC 4	6.2.2 : Percentage of Districts achieving Open Defecation Free (ODF) target.	PR & DW H & UD			
	OP 1	6.2.3 : Proportion of schools with separate toilet facility for girls	S & ME ST & SC Dev.			
	Pro 1	6.2.4_OD: Installed sewage treatment capacity as a proportion of sewage generated in urban areas (%)	H & UD			
6.3 : By 2030, improve water quality by reducing pollution, eliminating dumping and minimizing release of hazardous chemicals and materials, halving the proportion of untreated wastewater and substantially increasing recycling and safe reuse globally	OP 2	6.3.1 : Percentage of sewage treated before discharge into surface water bodies	Industry MSME H & UD WR F & E			
	OC 5	6.3.2 : Percentage of industries (17 category of highly polluting industries/ grossly polluting industry/red category of industries) complying with waste water treatment as per CPCB norms.	Industry MSME H & UD WR F & E			
	OP 3	6.3.3: Proportion of waste water treatment capacity created vis - à - vis total generation	Industry MSME H & UD WR F & E			

Targets	Type of Indicators	OSIF Indicators	Departments	Major Schemes		
				Central Plan	Centrally Sponsored Schemes	State Sector Schemes
1	2	3	4	5	6	7
6.4 : By 2030, substantially increase water - use efficiency across all sectors and ensure sustainable withdrawals and supply of freshwater to address water scarcity and substantially reduce the number of people suffering from water scarcity	OC 6	6.4.1 : Percentage ground water withdrawal against availability	WR		1. Ground Water Management and Regulation - (WR) 2. Pradhan Mantri Krishi Sinchayee Yojana (PMKSY) - (WR) 3. Development of Water Resources Information System - (WR)	1. ERM/ NKCSUY ERM - (WR) 2. Mukhyamantri Adibandha Tiari Yojana (MATY) - (WR) 3. Canal Lining and System Rehabilitation Programme (CLSRP) - (WR)
	Pro 2	6.4.2 : Per capita storage of water (m3/person)	WR			
	Pro 3	6.4.3 : Per capita availability of water (m3/person)	WR			
	Pro 4	6.4.4_OD: Irrigation Potential Created through underground pipe line (UGPL) scheme (ha.)	WR			
	OP 4	6.4.5_OD: Percentage of cement concrete lining of canals completed out of total canal length (in Km.)	WR			
	OP 5	6.4.6_OD: Percentage of irrigated area covered under Rotational Irrigation (Warabandi) Supply in commands to total irrigated area	WR			
	Pro 5	6.4.7_OD: Percentage of irrigated area under Micro Irrigation out of total irrigated area	WR			
	Pro 6	6.4.8_OD: Percentage of irrigated area covered through field channels (OFD) under Command Area Development Programs out of total irrigated area	WR			
	Pro 7	6.4.9_OD: Percentage of Pani Panchayats doing Participatory Irrigation Management (PIM) out of total Pani Panchayats formed	WR			
	Pro 8	6.4.10_OD: Area irrigated using the regenerated irrigation water from the commands for subsequent irrigation (in ha)	WR			

Targets	Type of Indicators	OSIF Indicators	Departments	Major Schemes		
				Central Plan	Centrally Sponsored Schemes	State Sector Schemes
1	2	3	4	5	6	7
6.5 : By 2030, implement integrated water resources management at all levels, including through trans - boundary cooperation as appropriate	OP 6	6.5.1 : Percentage area of river basins brought under integrated water resources management	WR		1. River Basin Management - (WR) 2. National Water Mission - (WR) 3. River Interlinking - (WR) 4. Flood Mgmt. & Border Areas Prog - (WR) 5. National Hydrology Project - (WR)	1.Odisha Integrated Irrigation Project on Climate Resilient Agriculture (OIIPCRA) - (WR) 2. State Plan for Basin Management - (WR)
6.6 : By 2020, protect and restore water - related ecosystems, including mountains, forests, wetlands, rivers, aquifers and lakes	OP 7	6.6.1 : Number/area of over - exploited blocks	WR		1. National Water Quality Monitoring Programme (NWMP) - (F & E) 2. Ground Water Management and Regulation - (WR)	1. State Plan Scheme - (WR)
	OP 8	6.6.2 : Percentage sewage load treated in major rivers	Industry MSME H & UD WR F & E			
	Pro 9	6.6.3 : Biological assessment information of surface water bodies.	F & E WR			
6.a : By 2030, expand international cooperation and capacity - building support to developing countries in water - and sanitation - related activities and programmes, including water harvesting, desalination, water efficiency, wastewater treatment, recycling and reuse technologies	Pro 10	6.a.2 : Number of MoU/Co - operation agreements for capacity building and technology transfer	PR & DW H & UD WR Energy		1. National Water Mission - (WR) 2. Dam Rehab. & Improvement Prog. - (WR) 3. HRD and Capacity Building in NERIWALM, National Water Academy, RGI - Groundwater, MoWR and IEC - (WR)	
6.b : Support and strengthen the participation of local communities in improving water and sanitation management	Pro 11	6.b.1 : Percentage of developed Irrigated Command Area brought under Water Users Association (WUAs)	WR			
	OP 9	6.b.2 : Proportion of villages with Village Water & Sanitation Committee (VWSC)	PR & DW			
	Pro 12	6.b.3_OD: Number of Pani Panchayats formed	WR			

7 AFFORDABLE AND CLEAN ENERGY



Goal 7



Total Targets 5

Total OSIF Indicators 5

Indicator from NIF 4

Odisha Specific Indicator 1

Type of Indicators

Outcome Indicator (OC) 3

Output Indicator (OP) 2

Process Indicator (Pro) 0



Legend:

- Indicator from NIF
- Odisha Specific Indicator

Ensure access to affordable, reliable, sustainable and modern energy for all

Targets	Type of Indicators	OSIF Indicators	Departments	Major Schemes		
				Central Plan	Centrally Sponsored Schemes	State Sector Schemes
1	2	3	4	5	6	7
7.1 : By 2030, ensure universal access to affordable, reliable and modern energy services	OC 1	7.1.1 : Percentage of households with electricity	Energy		1. Rajiv Gandhi Grameen Vidyutikaran Yojana (RGGVY) - (Energy) 2. Deen Dayal Upadhyaya Gram Jyoti Yojana (DDUGJY) - (Energy) 3. Sahaj Bijli Harghar Yojana (Urban) - SAUBHAGYA - (Energy) 4. Integrated Power Development Scheme (IPDS) - (Energy)	1. Biju Gram Jyoti Yojana (BGJY) - (Energy) 2. Biju Saharanchala Vidyutikaran Yojana (BSVY) - (Energy) 3. Odisha Distribution System Strengthening programme (Energy) 4. State Capital Region Improvement of Power System - (Energy)
	OC 2	7.1.2 : Percentage of household using clean cooking fuel	FS & CW Energy			
7.2 : By 2030, increase substantially the share of renewable energy in the global energy mix	OC 3	7.2.1 : Renewable energy share in the total final energy mix	Energy S & T		1. Jawaharlal Nehru National Solar Mission (JNNSM) - (Energy)	1. Solar Power Plants, GEDCOL - (Energy) 2. Grid Interactive Roof Top Solar, GEDCOL - (Energy) 3. Solar Park, GEDCOL - (Energy) 4. Small Hydro Electric Projects - (Energy)
7.3 : By 2030, double the global rate of improvement in energy efficiency	OP 1	7.3.1 : Energy intensity measured in terms of primary energy and GDP	Energy P & C (DES)			

Targets	Type of Indicators	OSIF Indicators	Departments	Major Schemes		
				Central Plan	Centrally Sponsored Schemes	State Sector Schemes
1	2	3	4	5	6	7
7.a : By 2030, enhance international cooperation to facilitate access to clean energy research and technology, including renewable energy, energy efficiency and advanced and cleaner fossil - fuel technology, and promote investment in energy infrastructure and clean energy technology	OP 2	7.a.2_OD: Percentage Solar energy installed and generated through CLIP, DBW, STW Schemes etc. (in KW) (a) Percentage solar energy installed (b) Percentage solar energy generated	WR			1. Minor Irrigation Projects (MIPs) - (WR) 2. Check Dams - (WR) 3. Lift Irrigation Schemes - (WR)
7.b : By 2030, expand infrastructure and upgrade technology for supplying modern and sustainable energy services for all in developing countries, in particular least developed countries, small island developing States and landlocked developing countries, in accordance with their respective programmes of support		National/State Indicator not yet evolved				

8 DECENT WORK AND ECONOMIC GROWTH



Goal 8



Total Targets 12

Total OSIF Indicators 41

Indicator from NIF 36

Odisha Specific Indicator 5

Type of Indicators

Outcome Indicator (OC) 10

Output Indicator (OP) 19

Process Indicator (Pro) 12

8



Legend:

- Indicator from NIF
- Odisha Specific Indicator

Promote sustained, inclusive and sustainable economic growth, full and productive employment and decent work for all

Targets	Type of Indicators	OSIF Indicators	Departments	Major Schemes		
				Central Plan	Centrally Sponsored Schemes	State Sector Schemes
1	2	3	4	5	6	7
8.1 : Sustain per capita economic growth in accordance with national circumstances and, in particular, at least 7 per cent gross domestic product growth per annum in the least developed countries	OC 1	8.1.1 : Annual growth rate of GDP (adjusted to price changes) per capita	P & C (DES)			
8.2 : Achieve higher levels of economic productivity through diversification, technological upgrading and innovation, including through a focus on high - value added and labour - intensive sectors	OC 2	8.2.1 : Annual growth rate of GDP per employed person	P & C (DES)			Advertising and Publicity 1. Industrial Exhibition Fairs & Publicity - (MSME) 2. Organisation of Awareness Campaign / Workshop / Roadshows - (MSME) 3. Celebration of Entrepreneur's Week - (MSME) Financial Assistance to MSME 4. Incentive under MSMED Policy - (MSME) 5. Incentive under the provisions of IPR - (MSME) 6. Food Processing Policy - (MSME) 7. Assistance for Welfare of MSME Workers - (MSME) 8. Financial Assistance under Start - up Policy - (MSME)
	OC 3	8.2.2 : Total number of patents issued	C & T Industry MSME HT & H			
	OC 4	8.2.3 : Annual growth in manufacturing sector	MSME Industry P & C (DES)			
	OC 5	8.2.4 : Annual growth in agriculture sector	A & FE P & C (DES)			

Targets	Type of Indicators	OSIF Indicators	Departments	Major Schemes		
				Central Plan	Centrally Sponsored Schemes	State Sector Schemes
1	2	3	4	5	6	7
8.3 : Promote development - oriented policies that support productive activities, decent job creation, entrepreneurship, creativity and innovation, and encourage the formalization and growth of micro - , small - and medium - sized enterprises, including through access to financial services	OP 1	8.3.1 : Proportion of unorganized employment in non - agricultural sectors	P & C (DES)		1. PIP for ESI Scheme - (L & ESI)	1. Implementation of programmes under un - organised workers social security Act - (L & ESI)
	Pro 1	8.3.2 : Coverage under ESI and EPS	L & ESI			2. Improvement of working conditions and safety of Factories & Boilers - (L & ESI)
	OP 2	8.3.4 : No. of MSME units registered under the online Udyog Aadhaar registration.	MSME			3. Employees State Insurance (ESI) Scheme - Hospitals & Dispensaries - (L & ESI)
	OP 3	8.3.5 : Number of start - ups recognized under Start - up India/ Start - up Odisha	MSME			
	OC 6	8.3.6 : Total number of patents issued (Repeat in 8.2.2)	S & T			Financial Assistance to PSUs
	OP 4	8.3.7 : Growth of Registered Micro, Small and Medium Size Enterprises under online Udyog Aadhar Registration	MSME			4. Loans to PSUs - (MSME)
						5. Grants to PSUs - (MSME)
						Promotion of K & VI
						6. Rebate on Sale of Khadi Cloth - (MSME)
						7. Grants to OKVI Board - (MSME)
						8. Promotion of TalaGur (New) - (MSME)
						Promotion of MSME
						9. State Initiative for Micro & Small Enterprise Cluster Development Programme – (MSME)
						10. Infrastructure Development of DI / RICs / DICs and maintenance – (MSME)
						11. Establishment of Sector Specific MSME / Multi product parks/Estate and Agri Enterprises Park (New) – (MSME)
						12. Cluster Development Programme (State Share) – (MSME)
						13. Organisation of Udyoga Samadhan Sibira - (MSME)
						14. EDP / ESDP/ MDP through RICs/DICs and IED – (MSME)

Targets	Type of Indicators	OSIF Indicators	Departments	Major Schemes		
				Central Plan	Centrally Sponsored Schemes	State Sector Schemes
1	2	3	4	5	6	7
	OP 5	8.3.8 : Total loans outstanding to micro, small and medium enterprises	MSME			15. Revamping of IED Odisha - (MSME) 16. Financial support for Facilitation Centres at DI / RICs / DICs - (MSME) 17. Training Programme for Capacity Building - (MSME) 18. Financial Support for IT at DI/RICs/ DICs - (MSME) 19. Financial Support to Food Testing Laboratories - (MSME) 20. Promotion of Coir enterprises – (MSME) 21. Promotion of Salt industries – (MSME) 22. Information, Education and Communication - (MSME) 23. Mission Shakti - (WCD & MS) 24. Promotion of Handicrafts Industries - (HT & H) 25. Promotion of Handloom Industries - (HT & H)
	OP 6	8.3.9 : Outstanding Credit to Micro, Small and Medium Enterprises	MSME			
	Pro 2	8.3.10_OD: Number of persons trained and employed/self - employed in handloom/ handicraft sector (a) Handloom sector (b) Handicraft sector	HT & H			
	Pro 3	8.3.11_OD: 'Ease of Doing Business' score (EODB)	Industry			
8.4 : Improve progressively, through 2030, global resource efficiency in consumption and production and Endeavour to decouple economic growth from environmental degradation, in accordance with the 10 - Year Framework of Programmes on Sustainable Consumption and Production, with developed countries taking the lead	OC 7	8.4.1 : Renewable energy share in the total final energy mix (Repeat in 7.2.1)	Energy S & T			

Targets	Type of Indicators	OSIF Indicators	Departments	Major Schemes		
				Central Plan	Centrally Sponsored Schemes	State Sector Schemes
1	2	3	4	5	6	7
	OP 7	8.4.2 : Per capita fossil fuel consumption	Energy			
	Pro 4	8.4.3 : Proportion of waste recycled vs. waste generated	Industry H & UD MSME F & E			
	OP 8	8.4.4 : Proportion of sewage recycled vs. sewage generated	Industry H & UD MSME F & E			
8.5 : By 2030, achieve full and productive employment and decent work for all women and men, including for young people and persons with disabilities, and equal pay for work of equal value	OC 8	8.5.1 : Unemployment rate	P & C (DES)		1. Pradhan Mantri Kaushal Vikash Yojana (SD & TE) 2. Model Carrer Center (SD & TE) 3. National Programme for Persons with Disability- (SS & EPD) 4. National Social Assistance Programme (NSAP) - Indira Gandhi National Disability Pension (IGNDP) - (SS & EPD)	1. Odisha State Employment Mission 2. Skill Development of Youth through ITIs - (SD & TE) 3. Odisha Skill Development Project (ADB Assisted) - EAP 4. Skill Development Through Polytechnics - (SD & TE) 5. State Fund for PWDs - (SS & EPD) 6. Training and Rehabilitation of PWDs - (SS & EPD) 7. Scholarship for PWDs - (SS & EPD)
	OP 9	8.5.2 : Workforce Participation Ratio (WPR) & Labour force Participation rate (LFPR) . (a) Male (b) Female (c) Ratio of female LFPR to male LFPR	P & C (DES) L & ESI			
	Pro 5	8.5.3 : Wages earned by male - female in regular / casual employment	P & C (DES)			
	OP 10	8.5.4 : Number of employed persons with disabilities in public services.	SS & EPD			
	OP 11	8.5.5 : Total population with disabilities covered under social protection schemes	SS & EPD			
	Pro 6	8.5.6 : Share of unemployed persons in population aged 15 - 24 (percentage)	P & C (DES)			

Targets	Type of Indicators	OSIF Indicators	Departments	Major Schemes		
				Central Plan	Centrally Sponsored Schemes	State Sector Schemes
1	2	3	4	5	6	7
8.6 : By 2020, substantially reduce the proportion of youth not in employment, education or training	OC 9	8.6.1 : Unemployment Rate (15 - 24 years)	P & C (DES)			
8.7 : Take immediate and effective measures to eradicate forced labour, end modern slavery and human trafficking and secure the prohibition and elimination of the worst forms of child labour, including recruitment and use of child soldiers, and by 2025 end child labour in all its forms	OP 12	8.7.1 : Total crimes relating to human trafficking	Home		1. Integrated Child Protection Scheme (ICPS) - (WCD & MS)	1.Care & Protection of Children - (WCD & MS) 2.Biju Sishu Surakshya yojana - (WCD & MS) 3.Implementation of Child Labour Act - (WCD & MS) 4. State Action Plan for Elimination of Child Labour (Budget Provision) - (L & ESI)
	OC 10	8.7.2: Number of missing children	Home			
	Pro 7	8.7.3_OD: Implementation of State Action Plan for elimination of Child Labour	L & ESI			
8.8 : Protect labour rights and promote safe and secure working environments for all workers, including migrant workers, in particular women migrants, and those in precarious employment	OP 13	8.8.1 : Number of workers covered under Employees State Insurance (ESI) Act	L & ESI		1. ESIS - (L & ESI) 2. Mahatma Gandhi National Rural Employment Guarantee Act (MGNREGS) - (PR & DW)	1. Employees State Insurance (ESI) Scheme - Hospitals & Dispensaries - (L & ESI) 2. Rescue of Exploited Migrated labour - (L & ESI) 3. Improvement of Working condition s and saftey of Factories & Boilers - (L & ESI)
	Pro 8	8.8.2 : Number of migrant workers	L & ESI			
	OP 14	8.8.3 : Number of accidents in factories	L & ESI			
	OP 15	8.8.4 : Employment generated under Mahatma Gandhi National Rural Employment Guarantee Act (MGNREGA)	PR & DW			

Targets	Type of Indicators	OSIF Indicators	Departments	Major Schemes		
				Central Plan	Centrally Sponsored Schemes	State Sector Schemes
1	2	3	4	5	6	7
	Pro 9	8.8.5_OD: Implementation of Policy Instrument for safety and welfare of Interstate Migrant Workmen	L & ESI			1. Rescue of exploited migrated labour, (State Action Plan for the Safety and Welfare of Inter State Migrant Workmen) - (L & ESI)
	Pro 10	8.8.6_OD: Implementation of Policy Instrument for reducing accidents in Factories.	L & ESI			2. Improvement of working conditions & Safety - (L & ESI)
8.9 : By 2030, devise and implement policies to promote sustainable tourism that creates jobs and promotes local culture and products	OP 16	8.9.1 : Percentage change in number of tourists (domestic and foreign)	Tourism			1. Promotion and Publicity - (Tourism) 2. Publicity through Electronic Media, Print Media and Website - (Tourism) 3. Participation in International & National Tourism trade fairs, exhibitions and promotional road shows - (Tourism) 4. State level events like Konark festival, international sand art festival, Mukheswar dance festival, Rajarani music festival, Chilika bird festival, Dhauli Kalinga Mohastav etc. - (Tourism) 5. Production of Odisha Tourism Publicity Materials - (Tourism) 6. Odisha Tourism Outdoor Branding - (Tourism) 7. Skill Development Training under Odisha State Youth Policy - 2013 - (Tourism) 8. Infrastructure Development of Tourist Destinations - (Tourism)

Targets	Type of Indicators	OSIF Indicators	Departments	Major Schemes		
				Central Plan	Centrally Sponsored Schemes	State Sector Schemes
1	2	3	4	5	6	7
	OP 17	8.9.2 :Direct contribution of Tourism to total GDP and in growth rate	Tourism P & C (DES)	1. Capacity Building for Service Providers (CBSP) of Ministry of Tourism, Gol, New Delhi - (Tourism)		
8.10 : Strengthen the capacity of domestic financial institutions to encourage and expand access to banking, insurance and financial services for all	Pro 11	8.10.2 : Number of accounts (include deposit and credit accounts) of scheduled commercial banks per 1,000 population (Repeat in 1.4.5) (a) Total held by women (b) Total held by men (c) PMJDY accounts held by women (d) PMJDY accounts held by men	Finance			
	OP 18	8.10.3 : Number of banking outlets per 1,00,000 population	Finance			
	OP 19	8.10.4 : Number of Automated Teller Machines (ATMs) per 1,00,000 population	Finance			

Targets	Type of Indicators	OSIF Indicators	Departments	Major Schemes		
				Central Plan	Centrally Sponsored Schemes	State Sector Schemes
1	2	3	4	5	6	7
8.a : Increase Aid for Trade support for developing countries, in particular least developed countries, including through the Enhanced Integrated Framework for Trade - related Technical Assistance to Least Developed Countries		National / State Indicator not yet evolved				
8.b : By 2020, develop and operationalize a global strategy for youth employment and implement the Global Jobs Pact of the International Labour Organization	Pro 12	8.b.1 : Number of man days created under Mahatma Gandhi National Rural Employment Guarantee Act (MGNREGA)	PR & DW		1. Mahatma Gandhi National Rural Employment Guarantee Act (MGNREGS) - (PR & DW)	

9 INDUSTRY, INNOVATION AND INFRASTRUCTURE



Goal 9



Total Targets 8

Total OSIF Indicators 33

Indicator from NIF 17

Odisha Specific Indicator 16

Type of Indicators

Outcome Indicator (OC) 3

Output Indicator (OP) 13

Process Indicator (Pro) 17



Legend:

- Indicator from NIF
- Odisha Specific Indicator

Build resilient infrastructure, promote inclusive and sustainable industrialization and foster innovation

Targets	Type of Indicators	OSIF Indicators	Departments	Major Schemes		
				Central Plan	Centrally Sponsored Schemes	State Sector Schemes
1	2	3	4	5	6	7
9.1 : Develop quality, reliable, sustainable and resilient infrastructure, including regional and trans - border infrastructure, to support economic development and human well - being, with a focus on affordable and equitable access for all	OC 1	9.1.1 : Proportion of the rural /urban / total population / habitations who live within 2 km of an all - season road (a) Rural (b) Urban (c) Total (d) Targeted habitations connected by all weather road under PMGSY	RD Works WR R & DM (OSDMA) PR & DW		1. Prime Minister Gram Sadak Yojana (PMGSY) - (RD) 2. Central Road Fund - (Works) 3. SCA for KBK Districts - (Works) 4. Road Reconstruction Plan in LWE Areas - (Works) 5. Construction/Improvement of Roads & Bridges - (Works)	1. Development around Jagannath Temple Puri including Land Aquisition (ABADHA) - (Works) 2. PPP Road Projects & Interim Arrangment - (Works) 3. State Highway Development Project (SHDP) - (Works) 4. Biju Express Way - (Works) 5. Odisha State Road Project (OSRP) - EAP - (Works) 6. Infrastructure Development Fund Scheme (IDFS) for KBK Districts - (Works) 7. RIDF - (Works) 8. Road Development Programme - (Works) 9. Construction/Improvement of Roads & Bridges - RIDF - (Works) 10. State Plan (Normal) - Roads & Bridges - (Works) 11. Gopabandhu Grameen Yojana (GGY) - (PR & DW) 12. Biju Setu Yojana (BSY) - RIDF - (RD) 13. Improvement/Completion of RD Roads & Bridges - RIDF - (RD) 14. Mukhaya Mantri Sadak Yojana - RIDF - (RD) 15. Improvement/Completion of RD Roads & Bridges - (RD) 16. Rural Road Connectivity - (RD) 17. Odisha Disaster Recovery Project (EAP) - (R & DM)
	OP 1	9.1.2 : Passenger and freight volumes, by mode of transport (a) Road (b) Water (c) Air	C & T GA			

Targets	Type of Indicators	OSIF Indicators	Departments	Major Schemes		
				Central Plan	Centrally Sponsored Schemes	State Sector Schemes
1	2	3	4	5	6	7
	Pro 1	9.1.3 : Gross Capital Formation by industry of use.	P & C (DES)			18. Promotion of Handloom Industries - (HT & H)
	Pro 2	9.1.4_OD: Availability of integrated road connectivity plan	Works RD WR F & E Steel & Mines			
	Pro 3	9.1.5_OD: Growth on sale of : (a) Handloom products (b) Handicraft products	HT & H			
	Pro 4	9.1.6_OD: Number of youths trained under Skill Development Programme and placed	C & T SD & TE			
	Pro 5	9.1.7_OD: Improvement in (a) Road density (b) Rail density	C & T			19. Construction / Renovation of Bus Stands - (C & T)
9.2 : Promote inclusive and sustainable industrialization and, by 2030, significantly raise industry's share of employment and gross domestic product, in line with national circumstances, and double its share in least developed countries	Pro 6	9.2.1 : Annual mean levels of fine particulate matter (e.g. PM2.5 and PM10) in cities (population weighted)	F & E		1. NAMP - (F & E)	
	Pro 7	9.2.2 : Manufacturing employment as a proportion of total employment	P & C (DES)			

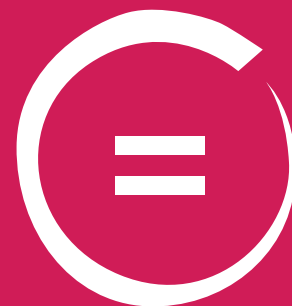
Targets	Type of Indicators	OSIF Indicators	Departments	Major Schemes		
				Central Plan	Centrally Sponsored Schemes	State Sector Schemes
1	2	3	4	5	6	7
9.3 : Increase the access of small - scale industrial and other enterprises, in particular in developing countries, to financial services, including affordable credit, and their integration into value chains and markets	OP 2	9.3.1 : Share of Household sector in total industry value added	P & C (DES)			Financial Assistance to MSME 1. Incentive under MSMED Policy - (MSME) 2. Incentive under the provisions of IPR - (MSME) 3. Food Processing Policy - (MSME) 4. Assistance for Welfare of MSME Workers - (MSME) 5. Financial Assistance under Start - up Policy - (MSME) Financial Assistance to PSUs 6. Loans to PSUs - (MSME) 7. Grants to PSUs - (MSME)
	Pro 8	9.3.2 : Percentage/ Proportion of Credit Flow to MSMEs (as a Percentage of Total Adjusted Net Bank Credit)	MSME			
9.4 : By 2030, upgrade infrastructure and retrofit industries to make them sustainable, with increased resource - use efficiency and greater adoption of clean and environmentally sound technologies and industrial processes, with all countries taking action in accordance with their respective capabilities	Pro 9	9.4.1 : CO2 equivalent emission per unit of value added, CO2 saved from LED bulbs (a) CO2 emission per unit of value added (b) CO2 saved from LED bulbs	F & E Energy			1. UNNATI Initiative - (H & UD)
	OP 3	9.4.2 : Energy use intensity of manufacturing value added.	Industry Energy P & C (DES)			

Targets	Type of Indicators	OSIF Indicators	Departments	Major Schemes		
				Central Plan	Centrally Sponsored Schemes	State Sector Schemes
1	2	3	4	5	6	7
9.5 : Enhance scientific research, upgrade the technological capabilities of industrial sectors in all countries, in particular developing countries, including, by 2030, encouraging innovation and substantially increasing the number of research and development workers per 1 million people and public and private research and development spending	OP 4	9.5.1 : Percentage share of government spending on intellectual properties product (Research and Development) to total GDP	Finance MSME S & T P & C (DES)			1. Popularisation of Science & Technology - (S & T) 2. Support to Scientific Institutions - (S & T) 3. State Council on S & T including Regional/District Science Centres - (S & T) 4. Scheme for Start - up Odisha, (MSME)
	OP 5	9.5.2 : Researchers (in full time equivalent) per million inhabitants	Industry MSME S & T HE			
	OP 6	9.5.3 : Total number of Patents issued (Repeat in 8.2.2)	C & T Industry MSME HT & H			
9.a :Facilitate sustainable and resilient infrastructure development in developing countries through enhanced financial, technological and technical support to African countries, least developed countries, landlocked developing countries and small island developing States						
9.b : Support domestic technology development, research and innovation in developing countries, including by ensuring a conducive policy environment for, inter alia, industrial diversification and value addition to commodities	OP 7	9.b.1 : Share of Intellectual Property Products in total Gross Fixed Capital Formation	P & C (DES)			
	OP 8	9.b.2 : Share of GVA of companies with research & development as main activity in total GVA from Private Corporate Sector	Industry E & IT P & C (DES)			
	OP 9	9.b.3 : Share of GVA of Information and Computer related activities in total GVA	E & IT P & C (DES)			

Targets	Type of Indicators	OSIF Indicators	Departments	Major Schemes		
				Central Plan	Centrally Sponsored Schemes	State Sector Schemes
1	2	3	4	5	6	7
	Pro 10	9.b.4_OD: Establishment/ Allocation of incubation space/Govt. Land/SEZ/ Software Parks/IT Clusters to/for IT/ ITeS/ESDM units (a) Number of incubation centres (b) Number of unit in SEZ (c) Growth in IT export (c) No of IT clusters / IT/ ITeS / ESDM units formed	E & IT			1. Development of IT Parks and Towers – (E & IT) 2. IT/ESDM promotion and facilitation – (E & IT) 3. Establishment of IIIT – (E & IT) 4. Training and Capacity Building – (E & IT) 5. IT Infrastructure and Connectivity – (E & IT) 6. Formation of Computer Emergency Response Team, Odisha (CERTO) – (E & IT)
	Pro 11	9.b.5_OD: Assistance provided to IT/ITeS/ ESDM units for patent registration.	E & IT			
	OP 10	9.b.6_OD: Annual growth rate of IT/ITeS/ ESDM units in the State	E & IT			
	Pro 12	9.b.7_OD: Number of academic institution with IT courses for promoting IT education	E & IT HE MSME ST & SC Dev. SD & TE HT & H			
	Pro 13	9.b.8_OD: Number of youths provided training on Industry focus curriculum	E & IT MSME Industry HT & H SD & TE HE			
	OP 11	9.b.9_OD: Wordclass ICT infrastructure for connecting and integrating all ICT operators, Service providers, Government regulators and end users.	E & IT			
	Pro 14	9.b.10_OD: Number of proactive measures for securing IT applications from cyber intrusion and vulnerabilities	E & IT			

Targets	Type of Indicators	OSIF Indicators	Departments	Major Schemes		
				Central Plan	Centrally Sponsored Schemes	State Sector Schemes
1	2	3	4	5	6	7
	Pro 15	9.b.11_OD: Percentage of employment of local youths in IT/ ITes/ESDM units.	E & IT			
	OC 2	9.b.12_OD: Percentage of employment generated through: (a) Handloom (b) Handicrafts (c) MSME	HT & T MSME			
9.c : Significantly increase access to information and communications technology and strive to provide universal and affordable access to the Internet in least developed countries by 2020	OC 3	9.c.1 : Number of Internet Subscriptions as percentage of total population	E & IT			1. IT Infrastructure and Conectivity - (E & IT) 2. IT Application & Services - (E & IT) 3. Development of IT Parks & Towers - (E & IT) 4. IT Infrastructure and Facilities - (E & IT) 5. IT/ESDM Promotion & Facilitation - (E & IT) 6. Establishment of Software Technology Park of India (STPI) - (E & IT) 7. Mission Shakti - (WCD & MS)
	OP 12	9.c.2 : No. of broadband subscribers per 10000 persons	E & IT			
	Pro 16	9.c.3_OD Number of WSHGs accessing information and communication technologies	WCD & MS			
	OP 13	9.c.4_OD: No of mobile connections per 100 persons in rural and urban areas (Tele - density) .	E & IT			
	Pro 17	9.c.5_OD: Percentage of Gram Panchayat covered under BharatNet	E & IT			

10 REDUCED INEQUALITIES



Goal 10



Total Targets 10

Total OSIF Indicators 11

Indicator from NIF 7

Odisha Specific Indicator 4

Type of Indicators

Outcome Indicator (OC) 3

Output Indicator (OP) 4

Process Indicator (Pro) 4



Legend:

- Indicator from NIF
- Odisha Specific Indicator

Reduce inequality within and among countries

Targets	Type of Indicators	OSIF Indicators	Departments	Major Schemes		
				Central Plan	Centrally Sponsored Schemes	State Sector Schemes
1	2	3	4	5	6	7
10.1 : By 2030, progressively achieve and sustain income growth of the bottom 40 per cent of the population at a rate higher than the national average	OC 1	10.1.1 : Growth rates of household expenditure per capita among the bottom 40 per cent of the population and the total population	P & C (DES)			
	OC 2	10.1.2 : Gini coefficient of household expenditure / Palma ratio based on household expenditure in rural /urban (a) Gini coefficient of household expenditure (b) Palma ratio based on household expenditure in rural (c) Palma ratio based on household expenditure in urban	P & C (DES)			
10.2 : By 2030, empower and promote the social, economic and political inclusion of all, irrespective of age, sex, disability, race, ethnicity, origin, religion or economic or other status	OP 1	10.2.1 : Proportion of people living below 50 per cent of median household expenditure	P & C (DES)	1.Implementation of Income Generating Schemes for SCs - (ST & SC Dev.) 2.Development of OBCs & Minorities - Multi Sectoral Devt. Programme - (ST & SC Dev.)	1. Pradhan Mantri Adarsh Gram Yojana (PMAGY) - (ST & SC Dev.) 2. Pradhan Mantri Jan Vikas Karyakram (PMJVK) - (ST & SC Dev.) 3. Umbrella Scheme for Trans - Gender - (SS & EPD) 4.National Programme for persons with Disability - (SS & EPD)	1.Development of OBCs & Minorities - (ST & SC Dev.) 2.Welfare of Persons with Disabilities - PWD - (SS & EPD) 3. Welfare of Distressed & Destitutes - (SS & EPD)
	OP 2	10.2.2 : Proportion of seats held by women in national Parliament, State Legislation and Local Self Government (Repeat in 5.5.1)	PR & DW PA WCD & MS			4. Food, PDS schemes - (FS & CW)

Targets	Type of Indicators	OSIF Indicators	Departments	Major Schemes		
				Central Plan	Centrally Sponsored Schemes	State Sector Schemes
1	2	3	4	5	6	7
	OC 3	10.2.3 : Proportion of SC/ST persons in Elected Bodies	PR & DW SS & EPD PA WCD & MS		5. PMAY - G - (PR & DW)	5. Sweekruti - (SS & EPD) 6. Biju Pucca Ghar Yojana (BPGY) - (PR & DW) 7. Nirman Shramik Pucca Ghar Yojana (NSPGY) - (PR & DW) 8. Pucca Ghar Yojana (Mining) - (PR & DW)
	OP 3	10.2.4_OD: Ratio of transgender labour force participation rate to male labour force participation rate	L & ESI SS & EPD			
	OP 4	10.2.5_OD: Proportion of eligible SC/ST Households provided with Pucca houses	PR & DW			
10.3 : Ensure equal opportunity and reduce inequalities of outcome, including by eliminating discriminatory laws, policies and practices and promoting appropriate legislation, policies and action in this regard		National / State Indicator not yet evolved				
10.4 : Adopt policies, especially fiscal, wage and social protection policies, and progressively achieve greater equality	Pro 1	10.4.1 : Proportion of budget allocated to North Eastern States / KBK districts	Finance			
	Pro 2	10.4.2_OD: Percentage of Scheduled Caste Sub Plan fund utilised	ST & SC Dev.			
	Pro 3	10.4.3_OD: Percentage of Scheduled Tribal Sub Plan fund utilised	ST & SC Dev.			

Targets	Type of Indicators	OSIF Indicators	Departments	Major Schemes		
				Central Plan	Centrally Sponsored Schemes	State Sector Schemes
1	2	3	4	5	6	7
10.5 : Improve the regulation and monitoring of global financial markets and institutions and strengthen the implementation of such regulations		National / State Indicator not yet evolved				
10.6 : Ensure enhanced representation and voice for developing countries in decision - making in global international economic and financial institutions in order to deliver more effective, credible, accountable and legitimate institutions		National / State Indicator not yet evolved				
10.7 : Facilitate orderly, safe, regular and responsible migration and mobility of people, including through the implementation of planned and well - managed migration policies		National / State Indicator not yet evolved				
10.a : Implement the principle of special and differential treatment for developing countries, in particular least developed countries, in accordance with World Trade Organization agreements		National / State Indicator not yet evolved				

Targets	Type of Indicators	OSIF Indicators	Departments	Major Schemes		
				Central Plan	Centrally Sponsored Schemes	State Sector Schemes
1	2	3	4	5	6	7
10.b : Encourage official development assistance and financial flows, including foreign direct investment, to States where the need is greatest, in particular least developed countries, African countries, small island developing States and landlocked developing countries, in accordance with their national plans and programmes		National / State Indicator not yet evolved				
10.c : By 2030, reduce to less than 3 per cent the transaction costs of migrant remittances and eliminate remittance corridors with costs higher than 5 per cent	Pro 4	10.c.1 : Remittance costs as a proportion of the amount remitted	Finance L & ESI			

11 SUSTAINABLE CITIES AND COMMUNITIES



Goal 11



Total Targets 10

Total OSIF Indicators 15

Indicator from NIF 15

Odisha Specific Indicator 0

Type of Indicators

Outcome Indicator (OC) 6

Output Indicator (OP) 4

Process Indicator (Pro) 5



Make cities and human settlements inclusive, safe, resilient and sustainable

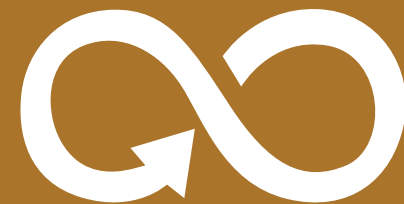
Targets	Type of Indicators	OSIF Indicators	Departments	Major Schemes		
				Central Plan	Centrally Sponsored Schemes	State Sector Schemes
1	2	3	4	5	6	7
11.1 : By 2030, ensure access for all to adequate, safe and affordable housing and basic services and upgrade slums	OC 1	11.1.1 : Percentage of Slums/ Economically Weaker Sections (EWS) households completed through formal/ affordable housing. (a) Against net demand assessment for houses (rural/urban) (b) Under PMAY as net demand assessment for houses (rural/urban) (c) Under Biju Pucca Ghar as net demand assessment for houses (rural/urban)	H & UD PR & DW		1.Prime Minister Awas Yojana - (H & UD) 2.Other Urban Devt. Scheme - AMRUT - (H & UD)	1. Jaga Mission - (H & UD) 2. Odisha Urban Housing Mission (OUHM) - (H & UD) 3. Rehabilitation of Urban slum in Berhampur City (WB Assisted) - ODRP - EAP - (H & UD)
	OP 1	11.1.2 : Percentage of Slum Area Covered with basic Services	H & UD			
	OC 2	11.1.3 : Proportion of Urban Population Living in Slums, informal Settlements or Inadequate Housing	H & UD			
11.2 : By 2030, provide access to safe, affordable, accessible and sustainable transport systems for all, improving road safety, notably by expanding public transport, with special attention to the needs of those in vulnerable situations, women, children, persons with disabilities and older persons	OC 3	11.2.1 : Proportion of cities with efficient urban mobility and public transport	H & UD			1. Urban Road Transport - (H & UD) 2. Enforcement of Road Saftey - (Transport)

Targets	Type of Indicators	OSIF Indicators	Departments	Major Schemes		
				Central Plan	Centrally Sponsored Schemes	State Sector Schemes
1	2	3	4	5	6	7
11.3 : By 2030, enhance inclusive and sustainable urbanization and capacity for participatory, integrated and sustainable human settlement planning and management in all countries	Pro 1	11.3.1 : Proportion of cities with integrated development plans.	H & UD			1.Odisha Urban Infrastructure Dev.Fund Assisted by KFW,Germany - EAP - (H & UD)
	Pro 2	11.3.2 : Share of Mixed Land Use Area in overall city land use	H & UD			2.Infrastructure for Civic Amenities - (H & UD)
	OP 2	11.3.3 : Net Density	H & UD			
11.4 : Strengthen efforts to protect and safeguard the world's cultural and natural heritage	OP 3	11.4.1 : Restoration and Reuse of Historic Buildings	OLL & C H & UD		1. Financial Assistance for Archival repositories, Govt. Libraries and Museum - (OLL & C) 2. Heritage City Development and Augmentation Yojana (HRIDAY) - (H & UD)	1. Conservation Establishment - (OLL & C) 2.Development of Museum/Memorials - (OLL & C) 3.Preservation of Monuments and Bidhhist Heritage - (OLL & C) 4.State Archives - (OLL & C) 5.State Museum & Research - (OLL & C) 6.Development/Renovation of Auditoriums & Kala Mandaps - (OLL & C)
11.5 : By 2030, significantly reduce the number of deaths and the number of people affected and substantially decrease the direct economic losses relative to global gross domestic product caused by disasters, including water - related disasters, with a focus on protecting the poor and people in vulnerable situations	OC 4	11.5.1 : Number of deaths, missing persons and directly affected persons attributed to disasters per 100,000 population (Repeat in 1.5.1)	Home R & DM (OSDMA)	1. Disaster Management - (R & DM)	1. National Cyclone Reconstruction & Management Programme (NCRMP) - (R & DM)	1. IDSS - (R & DM) 2. LDS - (R & DM) 3. Odisha Disaster Recovery Project (WB) - EAP - (R & DM)

Targets	Type of Indicators	OSIF Indicators	Departments	Major Schemes		
				Central Plan	Centrally Sponsored Schemes	State Sector Schemes
1	2	3	4	5	6	7
11.6 : By 2030, reduce the adverse per capita environmental impact of cities, including by paying special attention to air quality and municipal and other waste management	OC 5	11.6.1 : Proportion of urban solid waste regularly collected and with adequate final discharge out of total urban solid waste generated, by cities /wards (a) Percentage of wards with 100% door to door waste collection (b) Percentage of waste processed	H & UD		1. Swachh Bharat Mission - Urban (SBM - U) - (H & UD)	1.Other Urban Development Scheme - Solid Waste Management - (H & UD) 2.Urban Sewerage & Sanitation - Urban Sewerage Scheme - (H & UD)
	OC 6	11.6.2 : Annual mean levels of fine particulate matter (e.g. PM2.5 and PM10) in cities (population weighted) (Repeat in 9.2.1)	F & E		2. National Air Quality Monitoring Programme (NAMP) - (E & F)	
	Pro 3	11.6.3 : Number of days the levels of fine particulate matter (PM 2.5 and PM 10) above mean level	F & E			
11.7 : By 2030, provide universal access to safe, inclusive and accessible, green and public spaces, in particular for women and children, older persons and persons with disabilities	OP 4	11.7.1 : Per Capita Availability of Green Spaces	H & UD F & E		1. Atal Mission for Rejuvenation and Urban Transformation (AMRUT) - (H & UD)	
11.a : Support positive economic, social and environmental links between urban, peri - urban and rural areas by strengthening national and regional development planning						

Targets	Type of Indicators	OSIF Indicators	Departments	Major Schemes		
				Central Plan	Centrally Sponsored Schemes	State Sector Schemes
1	2	3	4	5	6	7
11.b : By 2020, substantially increase the number of cities and human settlements adopting and implementing integrated policies and plans towards inclusion, resource efficiency, mitigation and adaptation to climate change, resilience to disasters, and develop and implement, in line with the Sendai Framework for Disaster Risk Reduction 2015 - 2030, holistic disaster risk management at all levels	Pro 4	11.b.1 : Whether the Country /State has adopted and implemented disaster risk reduction strategies in line with the Sendai Framework for Disaster Risk Reduction 2015 - 2031	R & DM (OSDMA) All Deptts			1. SFDRR Roadmap - (R & DM)
	Pro 5	11.b.2 : Proportion of state and local governments that adopt and implement local disaster risk reduction strategies in line with national disaster risk reduction strategies	R & DM (OSDMA) Home			
11.c : Support least developed countries, including through financial and technical assistance, in building sustainable and resilient buildings utilizing local materials		National / State Indicator not yet evolved				

12 SUSTAINABLE CONSUMPTION AND PRODUCTION



Goal 12



Total Targets 11

Total OSIF Indicators 13

Indicator from NIF 11

Odisha Specific Indicator 2

Type of Indicators

Outcome Indicator (OC) 1

Output Indicator (OP) 2

Process Indicator (Pro) 10



Legend:

- Indicator from NIF
- Odisha Specific Indicator

Ensure sustainable consumption and production patterns

Targets	Type of Indicators	OSIF Indicators	Departments	Major Schemes		
				Central Plan	Centrally Sponsored Schemes	State Sector Schemes
1	2	3	4	5	6	7
12.1 : Implement the 10 - Year Framework of Programmes on Sustainable Consumption and Production Patterns, all countries taking action, with developed countries taking the lead, taking into account the development and capabilities of developing countries						
12.2 : By 2030, achieve the sustainable management and efficient use of natural resources	Pro 1	12.2.2_OD: Implementation of Modal Eco - race Conservation Programme (MECP)	HT & H			1. Promotion of Sericulture Industries (POSI) - (HT & H)
12.3 : By 2030, halve per capita global food waste at the retail and consumer levels and reduce food losses along production and supply chains, including post - harvest losses	OC 1	12.3.1 : Per capita food availability	A & FE FS & CW F & ARD	1. National Programme for Dairy Development - (F & ARD)	1. Annapurna - (FS & CW) 2. PDS - (FS & CW)	1. Food Storage & Warehousing Procurement Operation Support System - (FS & CW)
	Pro 2	12.3.2 : Post harvest storage and distribution losses of Central/States Pool stocks of rice	Co - operation A & FE	2. NFSA - (FS & CW)		2. Supply of Rice @ Rs.1 per Kg. - (FS & CW)
	OP 1	12.3.3_OD: Percentage of area covered under organic farming out of total crop area	A & FE		3. PKVY (NMSA) - (A & FE)	3. Backyard Poultry Rearing - (F & ARD) 4. Layer Farming in Deep Litter - (F & ARD) 5. Genetic Up - gradation of small animals - (F & ARD)

Targets	Type of Indicators	OSIF Indicators	Departments	Major Schemes		
				Central Plan	Centrally Sponsored Schemes	State Sector Schemes
1	2	3	4	5	6	7
12.4 : By 2020, achieve the environmentally sound management of chemicals and all wastes throughout their life cycle, in accordance with agreed international frameworks, and significantly reduce their release to air, water and soil in order to minimize their adverse impacts on human health and the environment	Pro 3	12.4.1 : Developing national secondary resource policy framework	F & E			
	Pro 4	12.4.2 : Development of National / State policy for environmentally sound management of hazardous chemical and waste	F & E H & FW H & UD WR HT & H A & FE Industry MSME			
12.5 : By 2030, substantially reduce waste generation through prevention, reduction, recycling and reuse	OP 2	12.5.1 : Number of: (a) Waste recycling plants installed (b) Quantity of hazard waste in MMT (c) Quantity of hazard waste sent to recycle to hazard waste generated	H & UD		1. Swachh Bharat Mission - Urban (SBM-U) - (H & UD) 2. Sewarage Treatment Plant at Puri - (H & UD)	1. UD - Solid waste Management - (H & UD)
	Pro 5	12.5.2 : Number of municipal corporations/ Municipalitiors/NACs using waste segregation techniques, solid waste treated agianst generated, sewage treated agianst generated (a) Percentage of solid waste treated agianst solid waste generated (b) Percenage of sewage treated agianst generated	H & UD			

Targets	Type of Indicators	OSIF Indicators	Departments	Major Schemes		
				Central Plan	Centrally Sponsored Schemes	State Sector Schemes
1	2	3	4	5	6	7
	Pro 6	12.5.3 : Number of municipal corporations/municipalities/ NACs banning use of plastic.	H & UD			
12.6 : Encourage companies, especially large and transnational companies, to adopt sustainable practices and to integrate sustainability information into their reporting cycle	Pro 7	12.6.1 : Proportion of companies publishing sustainability reports.	Industry MSME			
12.7 : Promote public procurement practices that are sustainable, in accordance with national policies and priorities						
12.8 : By 2030, ensure that people everywhere have the relevant information and awareness for sustainable development and lifestyles in harmony with nature						
12.a : Support developing countries to strengthen their scientific and technological capacity to move towards more sustainable patterns of consumption and production		National / State Indicator not yet evolved				

Targets	Type of Indicators	OSIF Indicators	Departments	Major Schemes		
				Central Plan	Centrally Sponsored Schemes	State Sector Schemes
1	2	3	4	5	6	7
12.b : Develop and implement tools to monitor sustainable development impacts for sustainable tourism that creates jobs and promotes local culture and products	Pro 8	12.b.1 : Number of sustainable tourism strategies or policies and action plans implemented with agreed monitoring and evaluation tools.	Tourism	1. Tourism - Pilgrimage Rejuvenation and Spiritual Augmentation Drive (PRASAD) - (Tourism)		1. New Tourism Policy and Critical Gap Funding - (Tourism) 2. Development and Managemrnt of Tourist Infrastructure - (Tourism) 3. Publicity of Tourism - (Tourism)
12.c : Rationalize inefficient fossil - fuel subsidies that encourage wasteful consumption by removing market distortions, in accordance with national circumstances, including by restructuring taxation and phasing out those harmful subsidies, where they exist, to reflect their environmental impacts, taking fully into account the specific needs and conditions of developing countries and minimizing the possible adverse impacts on their development in a manner that protects the poor and the affected communities	Pro 9	12.c.1 : Subsidy per unit of fossil fuel consumption.	Energy			
	Pro 10	12.c.2 : Tax per unit of fossil fuel consumption.	Energy			

13 CLIMATE ACTION



Goal 13



Total Targets 5

Total OSIF Indicators

Indicator from NIF 4

Odisha Specific Indicator 4

Type of Indicators

Outcome Indicator (OC) 0

Output Indicator (OP) 1

Process Indicator (Pro) 7



Legend:

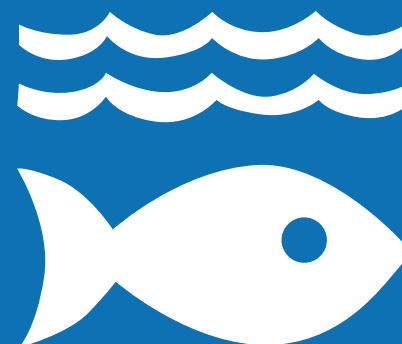
- Indicator from NIF
- Odisha Specific Indicator

Take urgent action to combat climate change and its impacts

Targets	Type of Indicators	OSIF Indicators	Departments	Major Schemes		
				Central Plan	Centrally Sponsored Schemes	State Sector Schemes
1	2	3	4	5	6	7
13.1 : Strengthen resilience and adaptive capacity to climate - related hazards and natural disasters in all countries	Pro 1	13.1.1 : Number of States / Departments with strategies for enhancing adaptive capacity and dealing with climate extreme weather events (EWE) . Crop area affected due to EWE (a) Strategies for enhancing adaptive capacity and dealing with climate EWE (b) Crop area affected due to EWE	R & DM (OSDMA) F & E WR A & FE H & UD PR & DW ST & SC Dev. S & T S & ME HE	1. Climate Change Action Plan - (F & E)	1. National Afforestation Programme - (F & E) 2. National Mission for Green India - (F & E) 3. Intensification of Forest Management - (F & E) 4. National Plan for Conservation of Aquatic Eco - System - (F & E)	1. Environmental Management - (F & E) 2. Ama Jungle Yojana - (F & E) 3. Increasing Green Cover in the State - (F & E) 4. Green Mahanadi Mission - (F & E) 5. Nature Conservation - (F & E) 6. Odisha Disaster Recovery Project (EAP) - (R & DM) 7. Input Subsidy - (A & FE) 8. GCF Project - (WR)
	Pro 2	13.1.2_OD: Stress tolerant varieties used as a percentage of Total quality seeds distributed	A & FE			
	Pro 3	13.1.3_OD: Recharge of ground water through construction of ground water recharge structures (GWRS) in the tanks/ ponds of the state. (no. of tanks / ponds/recharge wells)	WR			
	Pro 4	13.1.4_OD: Laying of underground pipe lines (UGPL) in irrigation commands to prevent water loss due to climate related hazards	WR			

Targets	Type of Indicators	OSIF Indicators	Departments	Major Schemes		
				Central Plan	Centrally Sponsored Schemes	State Sector Schemes
1	2	3	4	5	6	7
13.2 : Integrate climate change measures into national policies, strategies and planning	Pro 5	13.2.1 : Pre 2020 action achievements of pre 2020 Goals as per Country / State priority.	F & E C & T R & DM (OSDMA)			1. Strengthening SDMA & DDMA's - (R & DM)
	Pro 6	13.2.2 : Achievement of Nationally Determined Contribution (NDC) Goals in post 2020 period.	F & E R & DM (OSDMA)			
13.3 : Improve education, awareness - raising and human and institutional capacity on climate change mitigation, adaptation, impact reduction and early warning	Pro 7	13.3.1 : Number of States / Districts that have integrated climate mitigation and adaptation in education curricula and outreach programs	S & ME ST & SC Dev. R & DM (OSDMA) F & E P & C			1. DRR & CAA Concept from Class IV to VIII - (R & DM)
13.a : Implement the commitment undertaken by developed - country parties to the United Nations Framework Convention on Climate Change to a goal of mobilizing jointly \$100 billion annually by 2020 from all sources to address the needs of developing countries in the context of meaningful mitigation actions and transparency on implementation and fully operationalize the Green Climate Fund through its capitalization as soon as possible	OP 1	13.a.1_OD: Expenditure from State resources for availing GCF grants under GCF supported project on ground water recharging (INR in crore)	WR			
13.b : Promote mechanisms for raising capacity for effective climate change - related planning and management in least developed countries and small island developing States, including focusing on women, youth and local and marginalized communities		National/State Indicator not yet evolved				

14 LIFE BELOW WATER



Goal 14



Total Targets 10

Total OSIF Indicators 11

Indicator from NIF 10

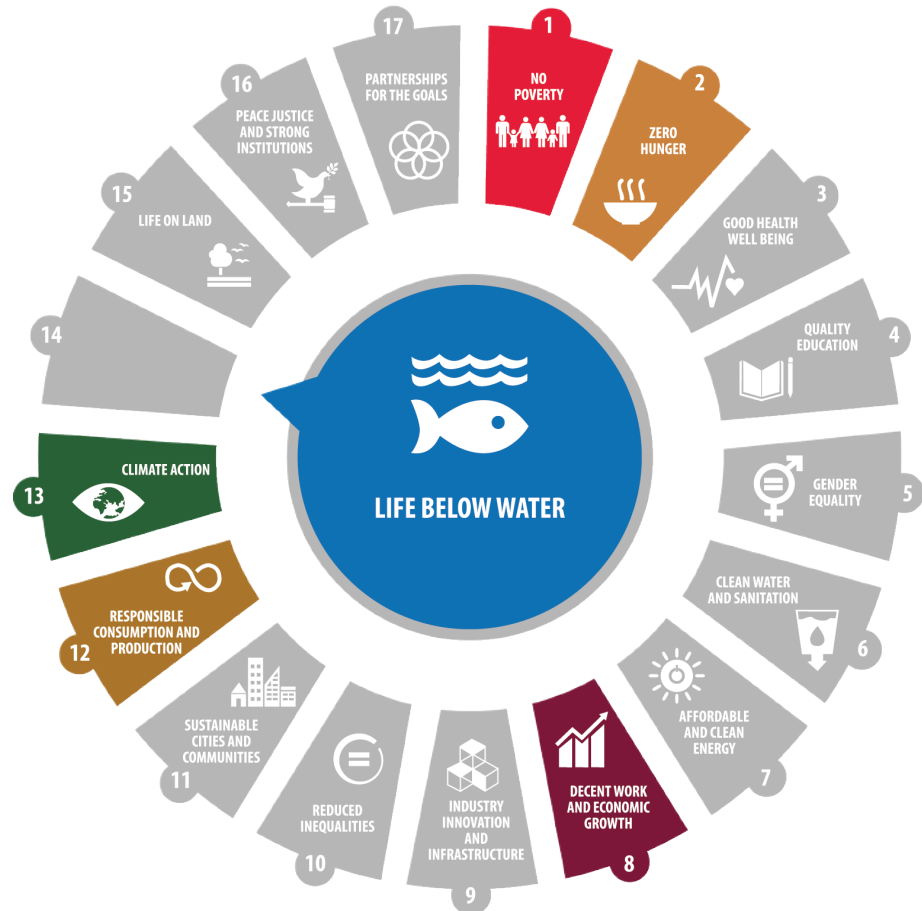
Odisha Specific Indicator 1

Type of Indicators

Outcome Indicator (OC) 3

Output Indicator (OP) 4

Process Indicator (Pro) 4



Legend:

- Indicator from NIF
- Odisha Specific Indicator

Conserve and sustainably use the oceans, seas and marine resources for sustainable development

Targets	Type of Indicators	OSIF Indicators	Departments	Major Schemes		
				Central Plan	Centrally Sponsored Schemes	State Sector Schemes
1	2	3	4	5	6	7
14.1 : By 2025, prevent and significantly reduce marine pollution of all kinds, in particular from land - based activities, including marine debris and nutrient pollution	OC 1	14.1.1 : Health Index area of coastal water (percentage change) / Coastal water quality index	H & UD Industry MSME PR & DW			
	OP 1	14.1.2 : Number of sewage treatment plants installed along the coast and construction of toilets under Swachh Bharat Mission (SBM) (a) Number of sewage treatment plants installed along the coast (b) Number of toilets constructed under SBM	H & UD Industry MSME PR & DW			
	OP 2	14.1.3 : Percentage change in use of nitrogen fertilizers in the coastal States / Districts	A & FE			
	OC 2	14.1.4_OD : Percentage of Ph level / dissolved oxygen/ Biological Oxygen Demand (BOD) in rivers (a) Percentage of Ph level in rivers (b) Percentage of dissolved oxygen in rivers (c) Percentage of BOD in rivers	A & FE			
					1. Swachh Bharat Mission - Urban (SBM - U) - (H & UD) 2. National Mission for Sustainable Agriculture - (A & FE)	

Targets	Type of Indicators	OSIF Indicators	Departments	Major Schemes		
				Central Plan	Centrally Sponsored Schemes	State Sector Schemes
1	2	3	4	5	6	7
14.2 : By 2020, sustainably manage and protect marine and coastal ecosystems to avoid significant adverse impacts, including by strengthening their resilience, and take action for their restoration in order to achieve healthy and productive oceans	OP 3	14.2.1 : Percentage change in area under mangroves	F & E		1.Conservation and Management of Mangrove - (F & E) 2. Saving –cum – Relief– (F & ARD)	1. Integrated Coastal Zone Management Project - (F & E) 2. Livelihood Support to Marine Fishermen – (F & ARD)
	Pro 1	14.2.2 : Implementation of Coastal Zone Regulation Notification of 2011	F & E			
	Pro 2	14.2.3 : Percentage change in Marine Protected Areas (MPA)	F & E F & ARD			
14.3 : Minimize and address the impacts of ocean acidification, including through enhanced scientific cooperation at all levels						
14.4 : By 2020, effectively regulate harvesting and end overfishing, illegal, unreported and unregulated fishing and destructive fishing practices and implement science - based management plans, in order to restore fish stocks in the shortest time feasible, at least to levels that can produce maximum sustainable yield as determined by their biological characteristics	OC 3	14.4.1 : Maximum Sustainable Yield (MSY) in fishing	F & ARD		1. Blue Revolution - Integrated Development & Management of Fisheries - (F & ARD)	1. Development of Marine Fisheries - (F & ARD) 2. Intensive Aquaculture & Inland Fisheries - (F & ARD) 3. Promotion of Inland & Marine Fisheries - (F & ARD) 4. Reservoir Fisheries Development - (F & ARD) 5. Development of Fisheries - (F & ARD) 6. Implementation of Fishery Policy - (F & ARD) 7. Welfare of Fisherman - (F & ARD) 8. Development of Brakish Water Aquaculture - (F & ARD) 9. Matsyajibi Unnayana Yojana (MUY) - (F & ARD)

Targets	Type of Indicators	OSIF Indicators	Departments	Major Schemes		
				Central Plan	Centrally Sponsored Schemes	State Sector Schemes
1	2	3	4	5	6	7
14.5 : By 2020, conserve at least 10 per cent of coastal and marine areas, consistent with national and international law and based on the best available scientific information	Pro 3	14.5.1 : Coverage of protected areas in relation to marine areas.	F & E		1. Conservation and Management of Mangrove - (E & F)	1. Integrated Coastal Zone Management Project - (F & E)
	OP 4	14.5.2 : Percentage change in area under mangroves (Repeat 14.2.1)	F & E			
14.6 : By 2020, prohibit certain forms of fisheries subsidies which contribute to overcapacity and overfishing, eliminate subsidies that contribute to illegal, unreported and unregulated fishing and refrain from introducing new such subsidies, recognizing that appropriate and effective special and differential treatment for developing and least developed countries should be an integral part of the World Trade Organization fisheries subsidies negotiation		National / State Indicator not yet evolved				
14.7 : By 2030, increase the economic benefits to small island developing States and least developed countries from the sustainable use of marine resources, including through sustainable management of fisheries, aquaculture and tourism		National / State Indicator not yet evolved				

Targets	Type of Indicators	OSIF Indicators	Departments	Major Schemes		
				Central Plan	Centrally Sponsored Schemes	State Sector Schemes
1	2	3	4	5	6	7
14.a : Increase scientific knowledge, develop research capacity and transfer marine technology, taking into account the Intergovernmental Oceanographic Commission Criteria and Guidelines on the Transfer of Marine Technology, in order to improve ocean health and to enhance the contribution of marine biodiversity to the development of developing countries, in particular small island developing States and least developed countries						
14.b : Provide access for small - scale artisanal fishers to marine resources and markets	Pro 4	14.b.1 : Assistance to the traditional / artisanal fishermen for procurement of FRP boats and other associated fishing implements.	F & ARD		1. Assistance to Fisherman for procurement of FRP Boat– (F & ARD) 2. Motorisation of Traditional crafts – (F & ARD)	1. Provision of Fisheries Machineries / Equipments – (F & ARD)
14.c : Enhance the conservation and sustainable use of oceans and their resources by implementing international law as reflected in the United Nations Convention on the Law of the Sea, which provides the legal framework for the conservation and sustainable use of oceans and their resources, as recalled in paragraph 158 of “The future we want”						

15

LIFE ON
LAND



Goal 15



Total Targets 12

Total OSIF Indicators 20

Indicator from NIF 19

Odisha Specific Indicator 1

Type of Indicators

Outcome Indicator (OC) 6

Output Indicator (OP) 7

Process Indicator (Pro) 7



Legend:

- Indicator from NIF
- Odisha Specific Indicator

Conserve and sustainably use the oceans, seas and marine resources for sustainable development

Targets	Type of Indicators	OSIF Indicators	Departments	Major Schemes		
				Central Plan	Centrally Sponsored Schemes	State Sector Schemes
1	2	3	4	5	6	7
15.1 : By 2020, ensure the conservation, restoration and sustainable use of terrestrial and inland freshwater ecosystems and their services, in particular forests, wetlands, mountains and dry lands, in line with obligations under international agreement	OC 1	15.1.1 : Forest Area as a proportion of total geographical area	F & E	1. MGNREGS (F & E)	1. National Afforestation Programme (NAP) - F & E (PCCF) 2. Green India Mission (GIM) - F & E (PCCF) 3. Forest Fire Prevention and Management (FPM) - F & E (PCCF) 4. National Bamboo Mission (NBM) - F & E (PCCF) 5. Elephant Management Project - F & E (PCCF - Wildlife) 6. Integrated Development of Wildlife Habitats - F & E (PCCF - Wildlife) 7. Satkosia Tiger Reserve - F & E (PCCF - Wildlife) 8. Similipal tiger Reserve - F & E (PCCF - Wildlife) 9. Similipal Biosphere Reserve - F & E (PCCF - Wildlife)	1. Increasing Green Cover in the State (IGC) - F & E (PCCF) 2. Green Mahanadi Mission (GMM) - F & E (PCCF) 3. Intensive Protection of Critically Endangered Area (IPCEA) - F & E (PCCF) 4. Forest Conservation, Development & Regeneration - F & E (PCCF) 5. Departmental Working Forest Coupes and Depots - F & E (PCCF) 6. Survey & Utilization of Forest Resources - F & E (PCCF) 7. Training Programme - F & E (PCCF) 8. Ama Jangal Yojana - F & E (PCCF) 9. Forest Research - F & E (PCCF) 10. State Medicinal Plant Board (SMPB) - F & E (PCCF) 11. Wildlife Protection and conservation measures - F & E (PCCF - Wildlife) 12. Management of Elephant and Corridor - F & E (PCCF - Wildlife) 13. Relocation of villages from sanctuaries and National Parks - F & E (PCCF - Wildlife)

Targets	Type of Indicators	OSIF Indicators	Departments	Major Schemes		
				Central Plan	Centrally Sponsored Schemes	State Sector Schemes
1	2	3	4	5	6	7
	OP 1	15.1.2 : Percentage of Tree Outside Forest (TOF) in total forest cover.	F & E			
	OC 2	15.1.3_OD: Decadal change in extent of water bodies within forests from 2005 to 2015 (%)	F & E			
15.2 : By 2020, promote the implementation of sustainable management of all types of forests, halt deforestation, restore degraded forests and substantially increase afforestation and reforestation globally	OP 2	15.2.1 : Percentage change in Forest Area coverage	F & E			1. Green Mahanadi Mission - (F & E)
	Pro 1	15.2.2 : Total area covered under different afforestation schemes	F & E			
	OC 3	15.2.3 : Total tree cover achieved outside forest area	F & E			
	Pro 2	15.2.4 : Number of Nagar - vans and School Nurseries created.	F & E			

Targets	Type of Indicators	OSIF Indicators	Departments	Major Schemes		
				Central Plan	Centrally Sponsored Schemes	State Sector Schemes
1	2	3	4	5	6	7
15.3 : By 2030, combat desertification, restore degraded land and soil, including land affected by desertification, drought and floods, and strive to achieve a land degradation - neutral world	OC 4	15.3.1 : Percentage of degraded area restored, Percentage change in area of desertification (a) Percentage of degraded area restored (b) Percentage of change in area of desertification	F & E		1. NFSM - Targeting Rice Fallow Areas (pulses) - (A & FE) 2. Targeting Rice Fallow Areas - Oilseeds - (A & FE)	1. Ama Jungle Yojana - (F & E)
	OP 3	15.3.2 : Increasing Tree / forest cover in degraded area	F & E			2. Machha Chasa Pain Nua Pokhari Yojana- (F & ARD)
	OP 4	15.3.3 : Percentage increase in net sown area	A & FE F & ARD			
15.4 : By 2030, ensure the conservation of mountain ecosystems, including their biodiversity, in order to enhance their capacity to provide benefits that are essential for sustainable development	Pro 3	15.4.1 : Increase in forest / vegetative cover in mountain areas	F & E		1. Elephant Management Project - F & E (PCCF - Wildlife) 2. Integrated Development of Wildlife Habitats 3. Satkosia Tiger Reserve - F & E (PCCF - Wildlife) 4. Similipal tiger Reserve - F & E (PCCF - Wildlife) 5. Similipal Biosphere Reserve - F & E (PCCF - Wildlife)	1. Wildlife Protection and conservation measures - F & E (PCCF - Wildlife) 2. Management of Elephant and Corridor - F & E (PCCF - Wildlife) 3. Relocation of villages from sanctuaries and National Parks - F & E (PCCF - Wildlife)
	Pro 4	15.4.2 : Restoration of water bodies / stream in mountain areas	F & E PR & DW			
	OP 5	15.4.3 : Conservation of local wildlife species	F & E			
	OC 5	15.4.4 : Increase in per capita income of mountain dwellers	ST & SC Dev. P & C (DES)			

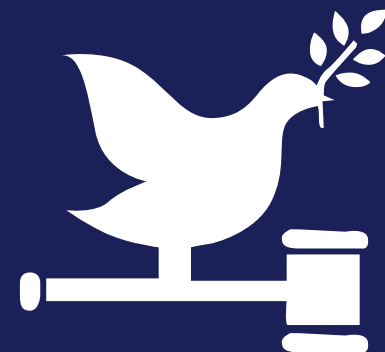
Targets	Type of Indicators	OSIF Indicators	Departments	Major Schemes		
				Central Plan	Centrally Sponsored Schemes	State Sector Schemes
1	2	3	4	5	6	7
15.5 : Take urgent and significant action to reduce the degradation of natural habitats, halt the loss of biodiversity and, by 2020, protect and prevent the extinction of threatened species	OC 6	15.5.1 : Red List Index	F & E		1. Elephant Management Project - F & E (PCCF - Wildlife) 2. Integrated Development of Wildlife Habitats - F & E (PCCF - Wildlife) 3. Satkosia Tiger Reserve - F & E (PCCF - Wildlife) 4. Similipal tiger Reserve - F & E (PCCF - Wildlife) 5. Similipal Biosphere Reserve - F & E (PCCF - Wildlife)	1. Identification and Declaration of biodiversity rich areas as "Biodiversity Heritage Sites (BHSs) " with participation of local people such as BMC, VSS, JFMC. - F & E (PCCF - Wildlife) 2. Wildlife Protection and conservation measures- F & E (PCCF - Wildlife) 3. Management of Elephant and Corridor - F & E (PCCF - Wildlife) 4. Relocation of villages from sanctuaries and National Parks - F & E (PCCF - Wildlife) 5. Protection of biodiversity by local people by formation of Biodiversity Management Committees (BMC) - F & E 6. Inventory research in wildlife sanctuaries and protected areas to assess the status of biodiversity and threatened plants, animals and other groups - (F & E) 7. Preparation of People's Biodiversity Registers (PBR) by BMCs with consultation of local people to document biodiversity and bio - resources available in BMCs along with people's perception on loss of biodiversity and traditional knowledge associated with bio - resources - (F & E) 8. Empowering BMCs and staffs of Forest Department through capacity building programmes and outreaching activities to protect and conserve biodiversity and habitats - (F & E) 9. Generating mass awareness through celebration of international events and mass communication media - (F & E)

Targets	Type of Indicators	OSIF Indicators	Departments	Major Schemes		
				Central Plan	Centrally Sponsored Schemes	State Sector Schemes
1	2	3	4	5	6	7
15.6 : Promote fair and equitable sharing of the benefits arising from the utilization of genetic resources and promote appropriate access to such resources, as internationally agreed						
15.7 : Take urgent action to end poaching and trafficking of protected species of flora and fauna and address both demand and supply of illegal wildlife products	OP 6	15.7.1 : Percentage reduction in traded wildlife that was poached or illicitly trafficked.	F & E		1. Elephant Management Project - (F & E) 2. Integrated Development of Wildlife Habitats - (F & E) 3. Satkosia Tiger Reserve - (F & E) 4. Similipal Tiger Reserve - (F & E) 5. Similipal Biosphere Reserve - (F & E)	1. Relocation of villages from sanctuaries and National Parks - (F & E) 2. Wildlife Protection and conservation measures - (F & E) 3. Management of Elephant and Corridor - (F & E) 4. Development of Eco - tourism - (F & E)
15.8 : By 2020, introduce measures to prevent the introduction and significantly reduce the impact of invasive alien species on land and water ecosystems and control or eradicate the priority species	Pro 5	15.8.1 : Percentage change in prevention and control of invasive alien species	F & E		1. Integrated Development of Wildlife Habitat - (F & E) 2. Satkosia Tiger Reserve - (F & E) 3. Similipal Tiger Reserve - (F & E)	1. Wildlife Protection & Conservation and measures - (F & E) 2. Management of Elephant and corridor - (F & E)

Targets	Type of Indicators	OSIF Indicators	Departments	Major Schemes		
				Central Plan	Centrally Sponsored Schemes	State Sector Schemes
1	2	3	4	5	6	7
15.9 : By 2020, integrate ecosystem and biodiversity values into national and local planning, development processes, poverty reduction strategies and accounts	Pro 6	15.9.1 : Progress towards national targets established in accordance with Aichi Biodiversity Target 2 of the Strategies Plan for Biodiversity 2011 - 2020	F & E			<p>1. Results of biodiversity inventory are to be included in management plans of the state Forest Department - (F & F)</p> <p>2. Empowerment of BMCs to levy charges for collection of bioresources and creation of Local Biodiversity Funds (LBF) . The funds generated thereby would be utilised towards protection of biodiversity and creation of livelihood opportunities for the local people - (F & E)</p>
15.a : Mobilize and significantly increase financial resources from all sources to conserve and sustainably use biodiversity and ecosystems						
15.b : Mobilize significant resources from all sources and at all levels to finance sustainable forest management and provide adequate incentives to developing countries to advance such management, including for conservation and reforestation	Pro 7	15.b.1 : Percentage of government spending on environmental protection	F & E Finance			
15.c : Enhance global support for efforts to combat poaching and trafficking of protected species, including by increasing the capacity of local communities to pursue sustainable livelihood opportunities	OP 7	15.c.1 : Number of detection and prevention of traded wildlife that was poached or illicitly trafficked.	F & E Home		<p>1. Elephant Management Project - (F & E)</p> <p>2. Integrated Development of Wildlife Habitats - (F & E)</p> <p>3. Satkosia Tiger Reserve - (F & E)</p> <p>4. Similipal Tiger Reserve - (F & E)</p> <p>5. Similipal Biosphere Reserve - (F & E)</p>	<p>1. Relocation of villages from sanctuaries and National Parks - (F & E)</p> <p>2. Wildlife Protection and conservation measures - (F & E)</p> <p>3. Management of Elephant and Corridor - (F & E)</p> <p>4. Development of Eco - tourism - (F & E)</p>

16

**PEACE AND JUSTICE
STRONG INSTITUTIONS**



Goal 16



Total Targets 12

Total OSIF Indicators 21

Indicator from NIF 17

Odisha Specific Indicator 4

Type of Indicators

Outcome Indicator (OC) 12

Output Indicator (OP) 5

Process Indicator (Pro) 4



Legend:

- Indicator from NIF
- Odisha Specific Indicator

Promote peaceful and inclusive societies for sustainable development, provide access to justice for all and build effective, accountable and inclusive institutions at all levels

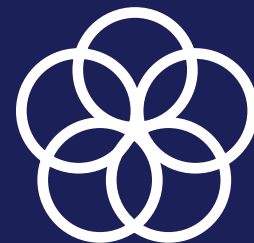
Targets	Type of Indicators	OSIF Indicators	Departments	Major Schemes		
				Central Plan	Centrally Sponsored Schemes	State Sector Schemes
1	2	3	4	5	6	7
16.1 : Significantly reduce all forms of violence and related death rates everywhere	OC 1	16.1.1 : Number of victims of intentional homicide per 100,000 population.	Home	1. Police Welfare - Emergency Response support System (ERSS) - (Home)	1. Modernisation of Police Force (MPF) - (Home) 2. Special Central Assistance (SCA) for 35 most LWE affected Districts - (Home) 3. Special Infrastructure Scheme (SIS) including 250 fortified police stations in LWE affected States - (Home) 4. Security Related Expenditure (SRE) - (Home)	1. CCTN - (Home) 2. Equipment (CCTV) - (Home) 3. Relief Fund - (Home) 4. Court - Prosecution - (Home)
	OP 1	16.1.2 : Proportion of population subjected to physical, psychological or sexual violence in the previous 12 months	Home			
16.2 : End abuse, exploitation, trafficking and all forms of violence against and torture of children	Pro 1	16.2.1 : Number of victims of and number rescued from human trafficking per 100,000 population, by sex, age and form of exploitation (a) by sex (b) by age (c) type of exploitation	Home			1. Victim Compensation - (Home)
	OC 2	16.2.2 : Proportion of Crime Committed against Children during the year (Per lakh children)	Home			
	OP 2	16.2.3 : Number of Missing Children (Repeat 8.7.2)	Home			
	Pro 2	16.2.4_OD: Number of children affected by trafficking and rescued by state police and WCD & MS Department through special intervention	Home WCD & MS			

Targets	Type of Indicators	OSIF Indicators	Departments	Major Schemes		
				Central Plan	Centrally Sponsored Schemes	State Sector Schemes
1	2	3	4	5	6	7
16.3 : Promote the rule of law at the national and international levels and ensure equal access to justice for all	OC 3	16.3.1 : Number of courts per lakh population	Home Law	1. Estt. of CBI Court - (Law) 2. Special Court - CBI Court, Bhubaneswar - (Law)	1. Estt. of Gram Nyayalayas - (Law) 2. Development of Infrastructure Facilities for Judiciary - Gram Nayalayas - (Law)	1.Court - Equipment - (Home)
	OC 4	16.3.2 : Number of Judges (all levels) per lakh population.	Home Law			
16.4 : By 2030, significantly reduce illicit financial and arms flows, strengthen the recovery and return of stolen assets and combat all forms of organized crime	Pro 3	16.4.1 : Number of cases under the Arms Act	Home Law		1. Plan expenditure - (Home)	1. Plan expenditure - (Home) 2. None - plan /Estt Operation and maintenance expenditure - (Home) 3. Victim Compensation Fund - (Home)
	Pro 4	16.4.2 : Value of Property Stolen & Recovered and Percentage Recovery	Home			
16.5 : Substantially reduce corruption and bribery in all their forms	OP 3	16.5.1 : Persons Arrested In Total Cognizable Crime Cases under Offences under Prevention of Corruption Act and Related Sections of Indian Penal Code (IPC).	Home			
	OC 5	16.5.2_OD: Estimated reported corruption crimes per 1 crore population	Home			

Targets	Type of Indicators	OSIF Indicators	Departments	Major Schemes		
				Central Plan	Centrally Sponsored Schemes	State Sector Schemes
1	2	3	4	5	6	7
16.6 : Develop effective, accountable and transparent institutions at all levels	OP 4	16.6.1 : Number of Government services provided online to citizens	GA E & IT		1. National e - Gov Action Plan (NeGAP) - (E & IT)	1. IT Application and Services - (E & IT)
	OC 6	16.6.2 : Percentage of RTI queries responded	All Deptts.			
16.7 : Ensure responsive, inclusive, participatory and representative decision - making at all levels	OC 7	16.7.1: Proportion of seats held by women in national Parliament, State Legislation and Local Self Government (Repeat in 5.5.1)	WCD & MS PA PR & DW			1. Election - Printing of Electoral Roll and Voter ID card - (Home)
	OP 5	16.7.2 : Proportion of SC/ST persons in elected bodies (Repeat in 10.2.3)	Home			
16.8 : Broaden and strengthen the participation of developing countries in the institutions of global governance		National / State Indicator not yet evolved				
16.9 : By 2030, provide legal identity for all, including birth registration	OC 8	16.9.1 : Percentage of births registered	H & FW		1. National e - Gov Action Plan (NeGAP) - (E & IT)	1. UID Cell - (E & IT)
	OC 9	16.9.2 : Proportion of population covered under Aadhaar	E & IT WCD & DW			
	OC 10	16.9.3_OD: Percentage of deaths registered	H & FW			
	OC 11	16.9.4_OD: Percentage of marriage registered	R & DM			

Targets	Type of Indicators	OSIF Indicators	Departments	Major Schemes		
				Central Plan	Centrally Sponsored Schemes	State Sector Schemes
1	2	3	4	5	6	7
16.10 : Ensure public access to information and protect fundamental freedoms, in accordance with national legislation and international agreements	OC 12	16.10.1 : Percentage of RTI queries responded. (Repeat in 16.6.2)	All Deptts.			
16.a : Strengthen relevant national institutions, including through international cooperation, for building capacity at all levels, in particular in developing countries, to prevent violence and combat terrorism and crime		National / State Indicator not yet evolved				
16.b : Promote and enforce non - discriminatory laws and policies for sustainable development		National/State Indicator not yet evolved				

17 PARTNERSHIPS FOR THE GOALS



Goal 17



Total Targets

19

Note :

National indicator related to Goal 17 are awaited from Ministry of Statistics and Programme Implementation (MoSPI), Government of India.



Strengthen the means of implementation and revitalize the Global Partnership for Sustainable Development

Targets	Targets	Targets
17.1 : Strengthen domestic resource mobilization, including through international support to developing countries, to improve domestic capacity for tax and other revenue collection	17.6 : Enhance North - South, South - South and triangular regional and international cooperation on and access to science, technology and innovation and enhance knowledge - sharing on mutually agreed terms, including through improved coordination among existing mechanisms, in particular at the United Nations level, and through a global technology facilitation mechanism	17.10 : Promote a universal, rules - based, open, non - discriminatory and equitable multilateral trading system under the World Trade Organization, including through the conclusion of negotiations under its Doha Development Agenda
17.2 : Developed countries to implement fully their official development assistance commitments, including the commitment by many developed countries to achieve the target of 0.7 per cent of gross national income for official development assistance (ODA/GNI) to developing countries and 0.15 to 0.20 per cent of ODA/GNI to least developed countries; ODA providers are encouraged to consider setting a target to provide at least 0.20 per cent of ODA/GNI to least developed countries	17.7 : Promote the development, transfer, dissemination and diffusion of environmentally sound technologies to developing countries on favourable terms, including on concessional and preferential terms, as mutually agreed	17.11 : Significantly increase the exports of developing countries, in particular with a view to doubling the least developed countries' share of global exports by 2020
17.3 : Mobilize additional financial resources for developing countries from multiple sources	17.8 : Fully operationalize the technology bank and science, technology and innovation capacity - building mechanism for least developed countries by 2017 and enhance the use of enabling technology, in particular information and communications technology	17.12 : Realize timely implementation of duty - free and quota - free market access on a lasting basis for all least developed countries, consistent with World Trade Organization decisions, including by ensuring that preferential rules of origin applicable to imports from least developed countries are transparent and simple, and contribute to facilitating market access
17.4 : Assist developing countries in attaining long - term debt sustainability through coordinated policies aimed at fostering debt financing, debt relief and debt restructuring, as appropriate, and address the external debt of highly indebted poor countries to reduce debt distress	17.9 : Enhance international support for implementing effective and targeted capacity - building in developing countries to support national plans to implement all the Sustainable Development Goals, including through North - South, South - South and triangular cooperation	17.13 : Enhance global macroeconomic stability, including through policy coordination and policy coherence
17.5 : Adopt and implement investment promotion regimes for least developed countries		17.14 : Enhance policy coherence for sustainable development

Targets
17.15 : Respect each country's policy space and leadership to establish and implement policies for poverty eradication and sustainable development
17.16 : Enhance the Global Partnership for Sustainable Development, complemented by multi - stakeholder partnerships that mobilize and share knowledge, expertise, technology and financial resources, to support the achievement of the Sustainable Development Goals in all countries, in particular developing countries
17.17 : Encourage and promote effective public, public - private and civil society partnerships, building on the experience and resourcing strategies of partnerships
17.18 : By 2020, enhance capacity - building support to developing countries, including for least developed countries and small island developing States, to increase significantly the availability of high - quality, timely and reliable data disaggregated by income, gender, age, race, ethnicity, migratory status, disability, geographic location and other characteristics relevant in national contexts
17.19 : By 2030, build on existing initiatives to develop measurements of progress on sustainable development that complement gross domestic product, and support statistical capacity - building in developing countries

Note

Note

